

EASTPORT, MAINE

AL-9125 (FAA)

RNAV (GPS) RWY 15

EASTPORT MUNI (EPM)

APP CRS 145°	Rwy Idg 4000
	TDZE 44
	Apt Elev 45

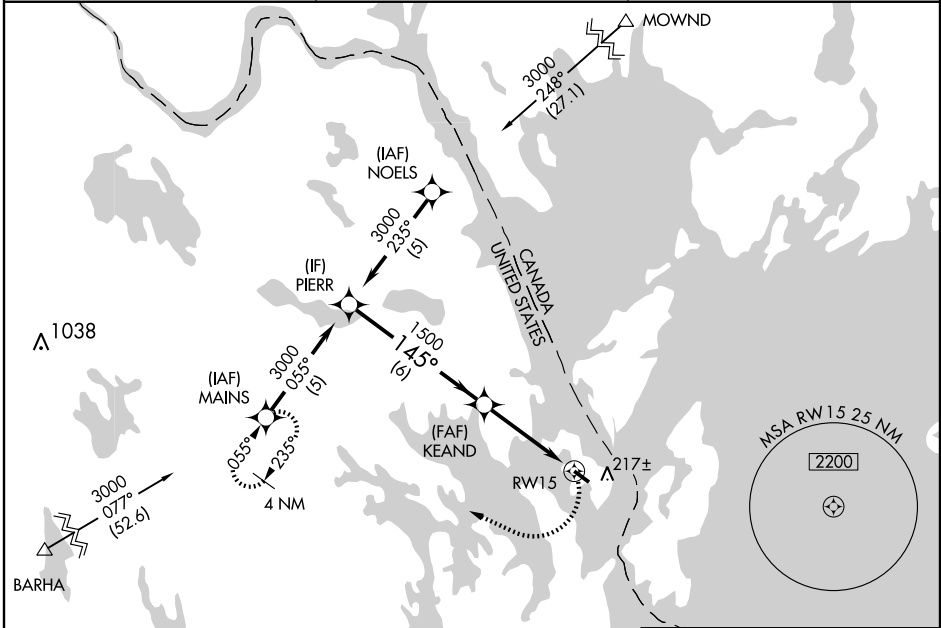
▼ DME/DME RNP-0.3 NA.
▲ NA If local altimeter setting not received, use Hancock County-Bar Harbor altimeter setting and increase all MDAs 160 feet.
 VDP NA with Hancock County-Bar Harbor altimeter setting.

MISSED APPROACH: Climbing right turn to 4000 direct MAINS and hold.

AWOS-A
260

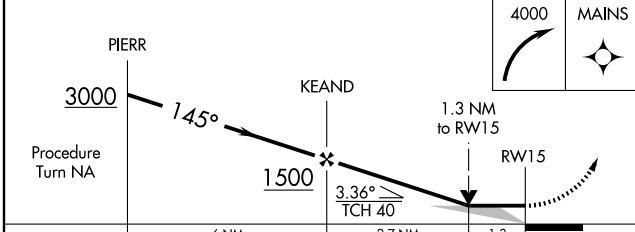
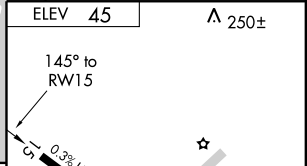
BOSTON CENTER
124.25 290.5

UNICOM
122.8 (CTAF)



NE-1, 22 OCT 2009 to 19 NOV 2009

NE-1, 22 OCT 2009 to 19 NOV 2009



CATEGORY	A	B	C	D
LNVA MDA	540-1	496 (500-1)	540-1¼ 496 (500-1¼)	540-1½ 496 (500-1½)
CIRCLING	580-1	535 (600-1)	580-1½ 535 (600-1½)	600-2 555 (600-2)

ELEV 45 ▲ 250±

4000 MAINS

TDZE 44

MIRL Rwy 15-33

REIL Rwy 15 and 33

EASTPORT, MAINE
Orig 08157

44°55'N - 67°01'W

EASTPORT MUNI (EPM)

RNAV (GPS) RWY 15