

EASTPORT, MAINE

AL-9125 (FAA)

# NDB RWY 33

EASTPORT MUNI (EPM)

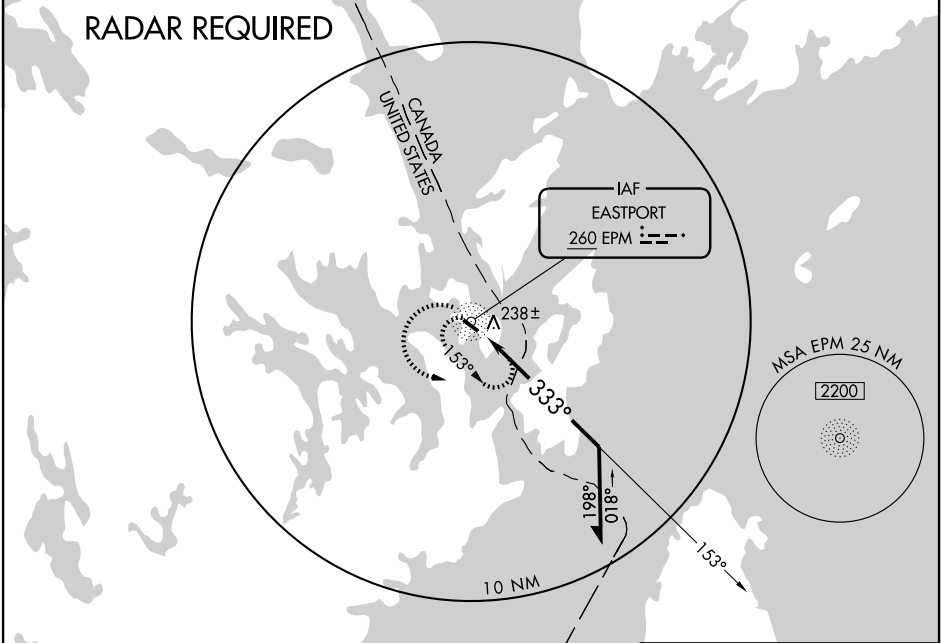
NDB EPM <b>260</b>	APP CRS <b>333°</b>	Rwy Idg TDZE Apt Elev	<b>4000</b> <b>45</b> <b>45</b>
-----------------------	------------------------	-----------------------------	---------------------------------------

**NA** If local altimeter setting not received, use Hancock County-Bar Harbor altimeter setting and increase all MDAs 160 feet.

MISSED APPROACH: Climbing left turn to 4000 in EPM NDB holding pattern.

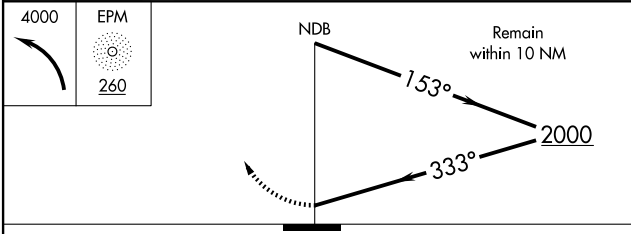
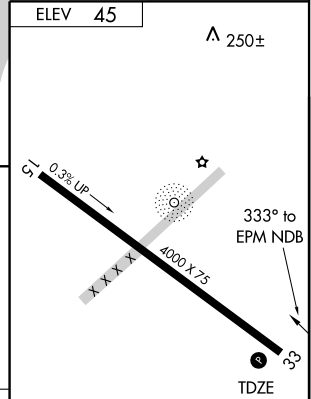
AWOS-A <b>260</b>	BOSTON CENTER <b>124.25 290.5</b>	UNICOM <b>122.8 (CTAF)</b>
----------------------	--------------------------------------	-------------------------------

## RADAR REQUIRED



NE-1, 22 OCT 2009 to 19 NOV 2009

NE-1, 22 OCT 2009 to 19 NOV 2009



CATEGORY	A	B	C	D	Knots Min:Sec
S-33	600-1 555 (600-1)		600-1½ 555 (600-1½)	600-1¾ 555 (600-1¾)	
CIRCLING	600-1 555 (600-1)		600-1½ 555 (600-1½)	600-2 555 (600-2)	

MIRL Rwy 15-33 **1**  
REIL Rwy 15 and 33 **1**

EASTPORT, MAINE  
Amdt 1 08157

44°55'N - 67°01'W

## EASTPORT MUNI (EPM) NDB RWY 33