

EASTPORT, MAINE

AL-9125 (FAA)

NDB EPM	APP CRS	Rwy Idg	4000
260	136°	TDZE	44
		Apt Elev	45

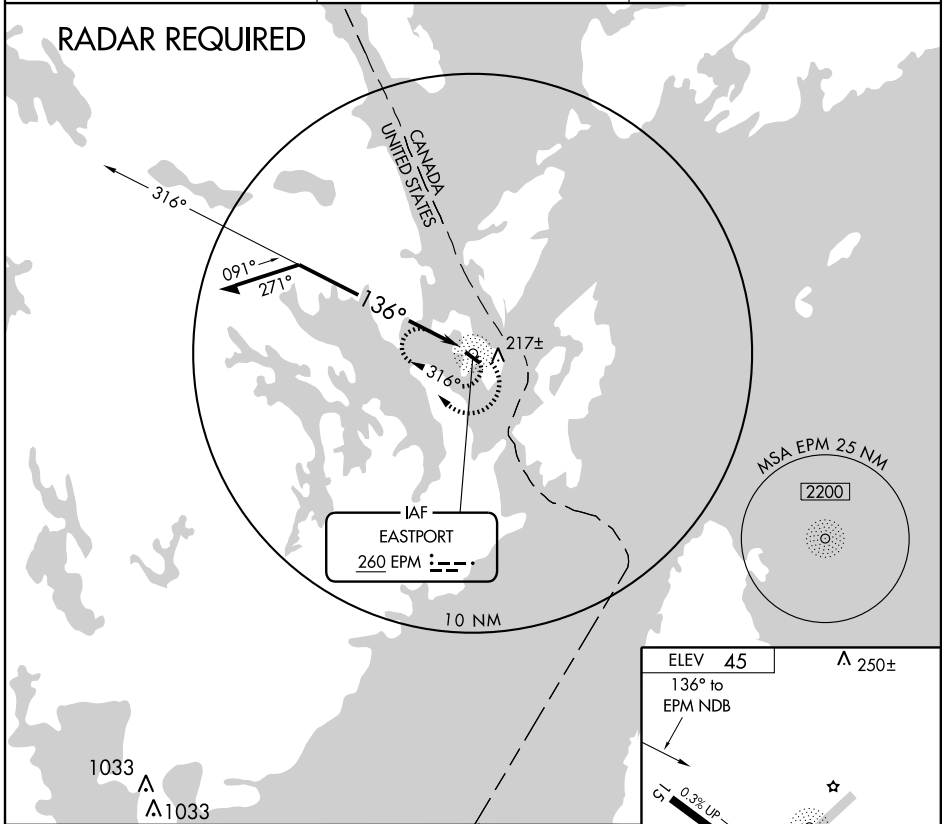
NDB RWY 15

EASTPORT MUNI (EPM)

▽ If local altimeter setting not received, use Hancock County-Bar Harbor altimeter setting and increase all MDAs 160 feet.

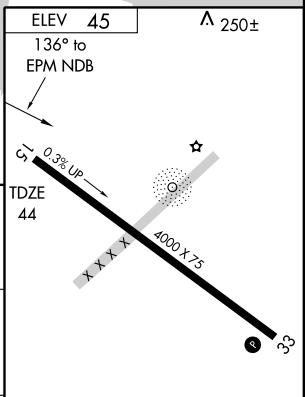
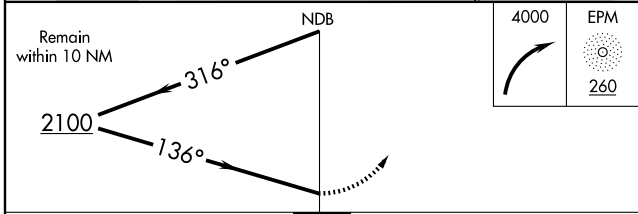
△ NA MISSED APPROACH: Climbing right turn to 4000 in EPM NDB holding pattern.

AWOS-A 260	BOSTON CENTER 124.25 290.5	UNICOM 122.8 (CTAF) 0
----------------------	--------------------------------------	---------------------------------



NE-1, 22 OCT 2009 to 19 NOV 2009

NE-1, 22 OCT 2009 to 19 NOV 2009



CATEGORY	A	B	C	D
S-15	740-1 696 (700-1)		740-2 696 (700-2)	740-2 1/4 696 (700-2 1/4)
CIRCLING	740-1 695 (700-1)		740-2 695 (700-2)	740-2 1/4 695 (700-2 1/4)

MIRL Rwy 15-33 0					
REIL Rwys 15 and 33 0					
Knots	60	90	120	150	180
Min:Sec					

EASTPORT, MAINE
Amdt 1 08157

44°55'N - 67°01'W

EASTPORT MUNI (EPM)

NDB RWY 15