

ST GEORGE, ALASKA

AL-9124 (FAA)

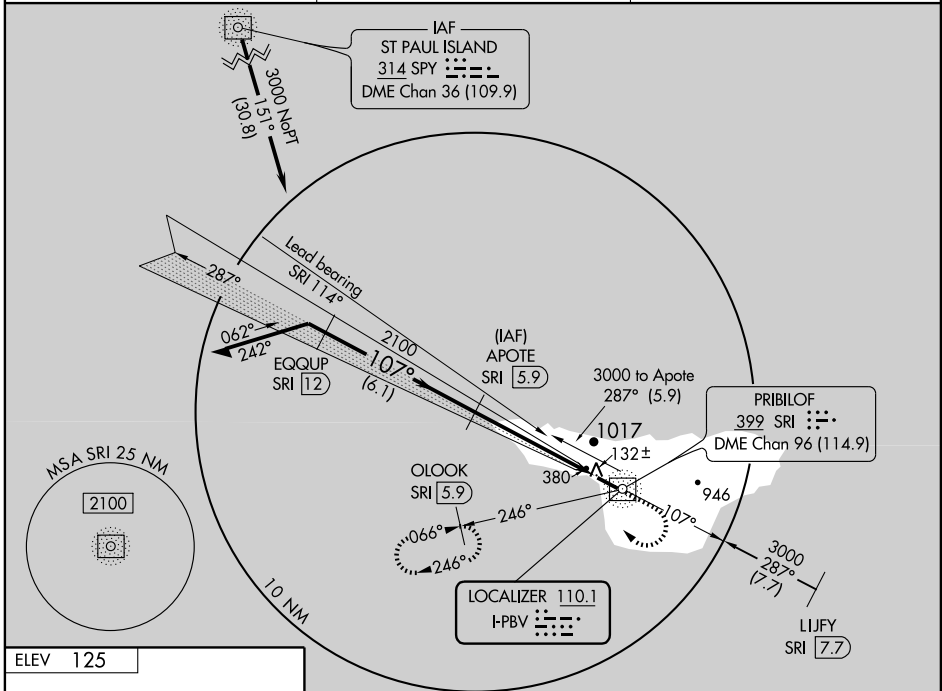
ILS RWY 11

ST GEORGE (PBV) (PAPB)

LOC I-PBV 110.1	APP CRS 107°	Rwy Idg 4980
		TDZE 125
		Apt Elev 125

<p>▽ DME from SRI NDB/DME. Simultaneous reception of I-PBV and SRI DME required.</p>	<p>MALSF</p>	<p>MISSED APPROACH: Climb to 800 then climbing right turn to 3000 via SRI NDB/DME 246° bearing to OLOOK/SRI 5.9 DME and hold, continue climb in hold to 3000.</p>
---	---------------------	--

<p>ASOS 135.45</p>	<p>ANCHORAGE CENTER 119.1 339.8</p>	<p>CTAF 122.8 </p>
-------------------------------	--	-------------------------------



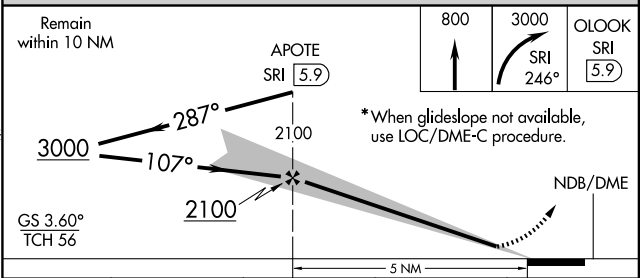
AK, 22 OCT 2009 to 17 DEC 2009

AK, 22 OCT 2009 to 17 DEC 2009

ELEV 125



ADF and DME REQUIRED



REIL Rwy 29
HIRL Rwy 11-29

CATEGORY	A	B	C	D
S-ILS 11*		525-1¼	400 (400-1¼)	NA
S-LOC 11			NA	
CIRCLING			NA	

ST GEORGE, ALASKA
Orig-A 09183

56°35'N-169°40'W

ST GEORGE (PBV) (PAPB)

ILS RWY 11