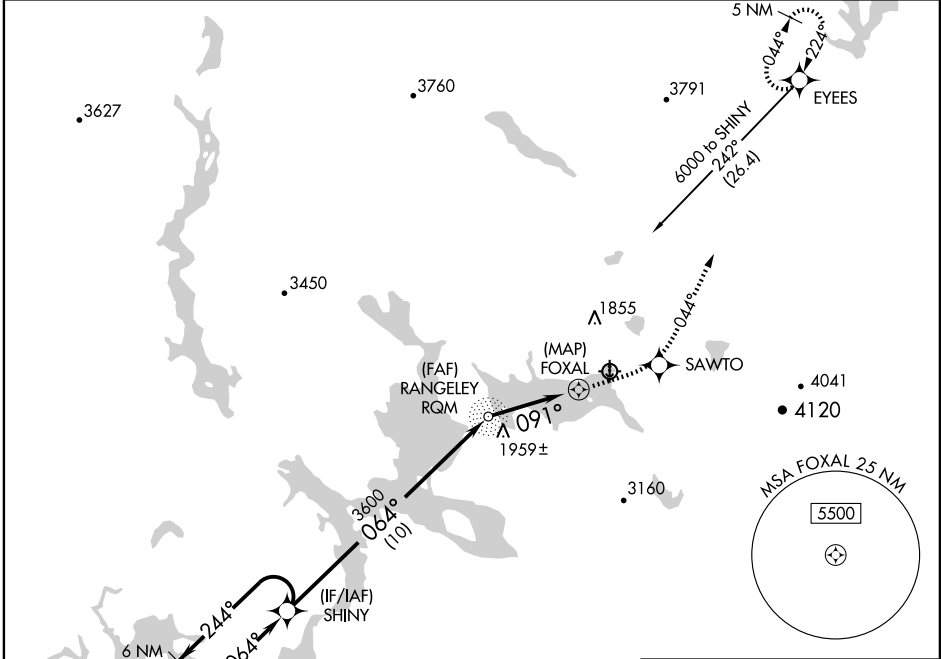


**RNAV (GPS)-C**  
RANGELEY LAKE SEAPLANE BASE (M57)

APP CRS <b>091°</b>	Rwy Idg TDZE Apt Elev	<b>N/A</b> <b>N/A</b> <b>1518</b>
------------------------	-----------------------------	---

<p><b>▼</b> DME/DME RNP-0.3 NA. Procedure NA at night. Obtain local altimeter setting on CTAF;</p> <p><b>▲</b> NA when not received, use Berlin altimeter setting.</p>	<p><b>MISSED APPROACH:</b> Climb to 6000 direct SAWTO and via 044° track to EYEEs and hold, continue climb-in-hold to 6000.</p>
--	---

<p>BOSTON CENTER <b>124.25 290.5</b></p>	<p>CTAF <b>122.9</b></p>
--	------------------------------



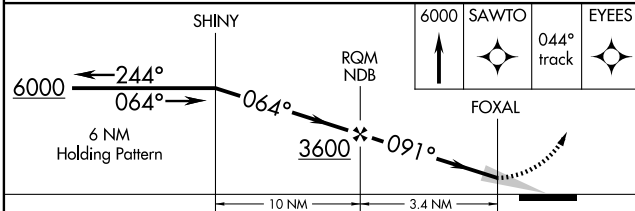
NE-1, 22 OCT 2009 to 19 NOV 2009

NE-1, 22 OCT 2009 to 19 NOV 2009

ELEV 1518

Procedure NA for arrivals at BML VOR/DME via V104 westbound.

SEE RANGELEY LAKE LANDING CHART



CATEGORY	A	B	C	D
CIRCLING	2320-1 802 (900-1)	2320-1¼ 802 (900-1¼)		NA
BERLIN ALTIMETER SETTING MINIMUMS				
CIRCLING	2460-1¼	942 (1000-1¼)		NA