

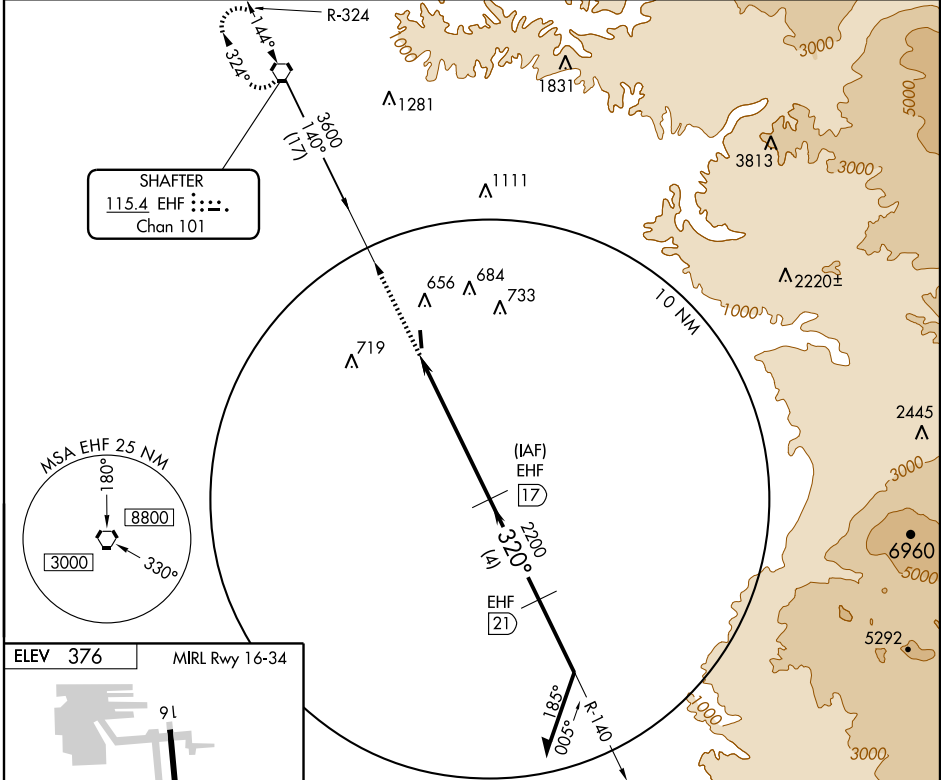
# VOR/DME RWY 34

BAKERSFIELD MUNI (L45)

VORTAC EHF <b>115.4</b> Chan 101	APP CRS <b>320°</b>	Rwy Idg TDZE Apt Elev <b>4000</b> <b>376</b> <b>376</b>
--	------------------------	--

NA Use Meadows Field altimeter setting.	MISSED APPROACH: Climb to 3000 direct EHF VORTAC and hold.
---	--

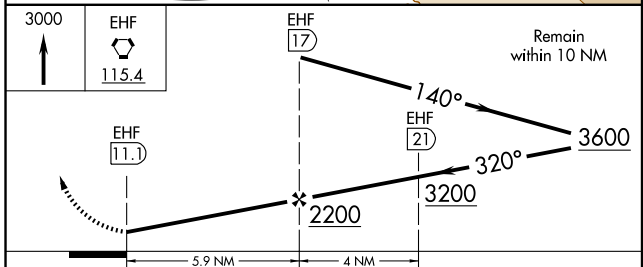
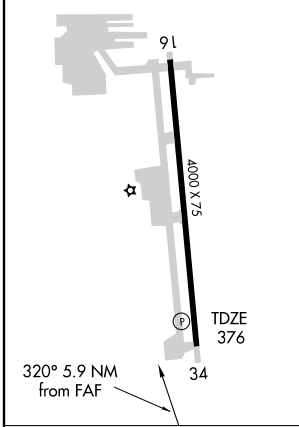
BAKERSFIELD APP CON ★ <b>126.45 270.3</b>	UNICOM <b>122.8 (CTAF)</b>
--	-------------------------------



SW-3, 22 OCT 2009 to 19 NOV 2009

SW-3, 22 OCT 2009 to 19 NOV 2009

ELEV 376 MIRL Rwy 16-34



CATEGORY	A	B	C	D
S-34	980-1	604 (700-1)	980-1½ 604 (700-1½)	980-2 604 (700-2)
CIRCLING	1060-1	684 (700-1)	1060-2 684 (700-2)	1080-2½ 704 (800-2½)