

WAAS CH 42506 W05A	APP CRS 051°	Rwy Idg TDZE Apt Elev	5000 235 236
--	------------------------	-----------------------------	---

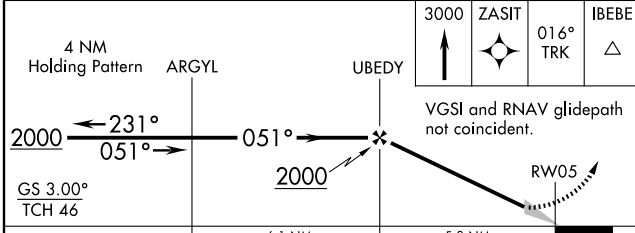
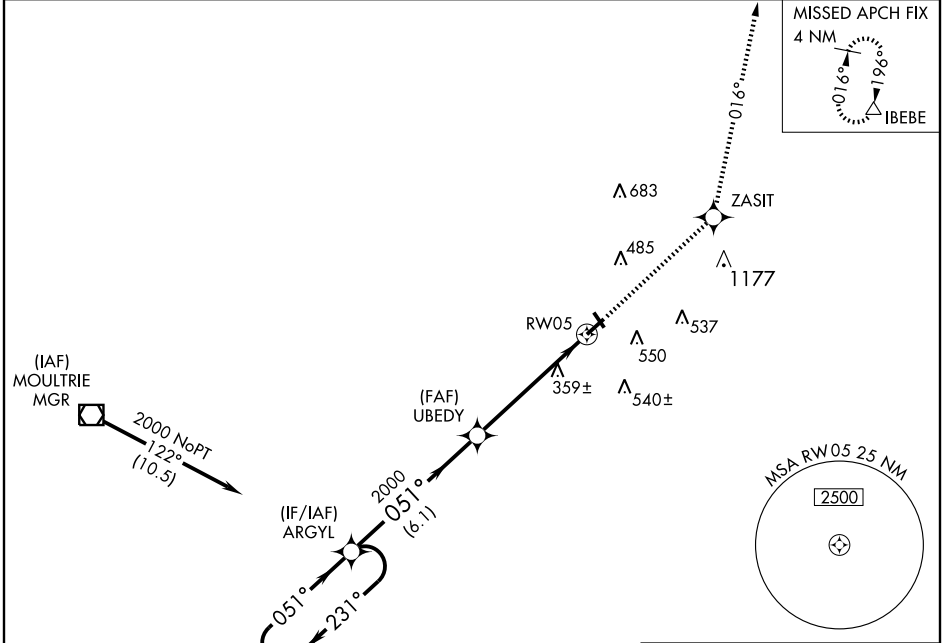
RNAV (GPS) RWY 5

ADEL/ COOK COUNTY (15J)

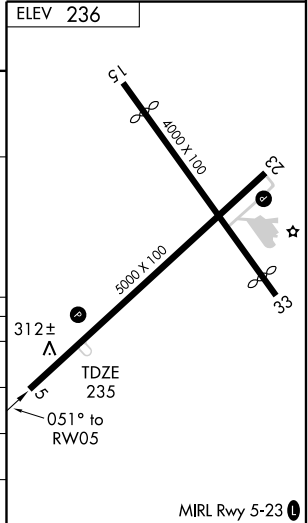
▼ DME/DME RNP-0.3 NA. Use Moultrie altimeter setting, when not received, use Valdosta Rgnl altimeter setting and increase all DAs 7 feet, and all MDAs 20 feet, and Circling Cats B, C and D visibility ¼ mile. Baro-VNAV NA.

▲ NA MISSED APPROACH: Climb to 3000 direct ZASIT and via 016° track to IBEBE and hold.

MOULTRIE AWOS-3 118.925	VALDOSTA APP CON* 126.6 285.6	UNICOM 122.8 (CTAF)
-----------------------------------	---	-------------------------------



CATEGORY	A	B	C	D
LPV DA	536-1 301 (300-1)			
LNAV/VNAV DA	633-1½ 398 (400-1½)			
LNAV MDA	800-1 565 (600-1)	800-1½ 565 (600-1½)	800-1¾ 565 (600-1¾)	
CIRCLING	960-1 724 (800-1)	960-2 724 (800-2)	960-2¼ 724 (800-2¼)	



SE-4, 22 OCT 2009 to 19 NOV 2009

SE-4, 22 OCT 2009 to 19 NOV 2009