

RNAV (GPS) RWY 23

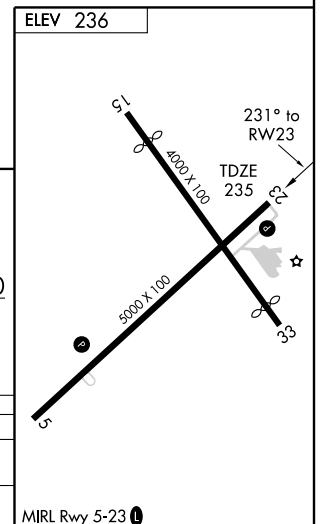
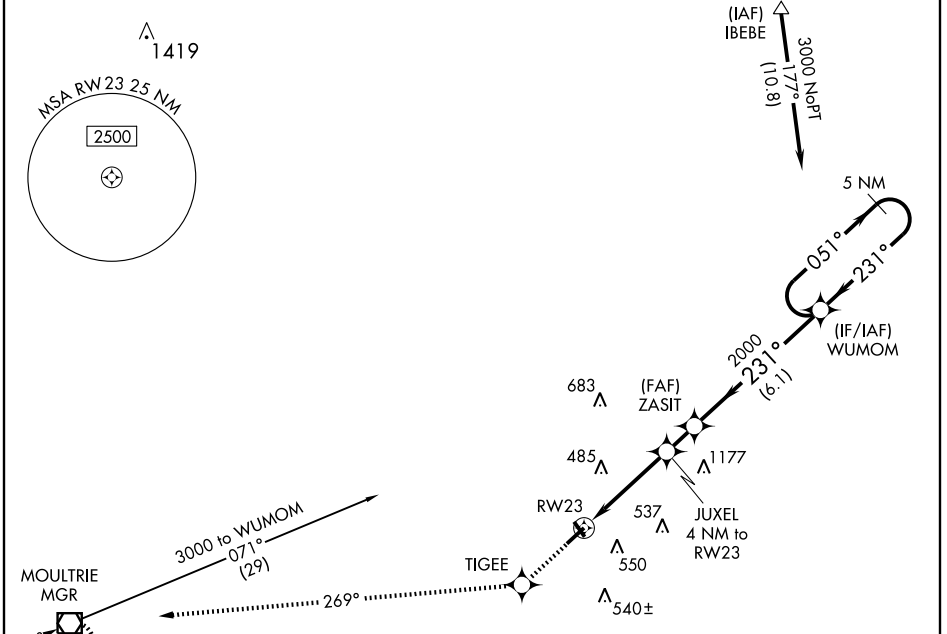
ADEL/ COOK COUNTY (15J)

APP CRS 231°	Rwy Idg 5000
	TDZE 235
	Apt Elev 236

▼ Use Moultrie altimeter setting; if not received, use Valdosta Rgnl altimeter setting and increase all MDAs 20 feet. DME/DME RNP-0.3 NA.
▲NA Visibility reduction by helicopters NA.

MISSED APPROACH: Climb to 3000 direct TIGEE and via 269° track to MGR VOR/DME and hold.

MOULTRIE AWOS-3 118.925	VALDOSTA APP CON★ 126.6 285.6	UNICOM 122.8 (CTAF) 0
-----------------------------------	---	---------------------------------



3000	TIGEE	TRK 269°	MGR	WUMOM 5 NM Holding Pattern
CATEGORY	A	B	C	D
RNAV MDA	740-1	505 (600-1)	740-1½	505 (600-1½)
CIRCLING	960-1	724 (800-1)	960-2 724 (800-2)	960-2¼ 724 (800-2¼)

MIRL Rwy 5-23 0

SE-4, 22 OCT 2009 to 19 NOV 2009

SE-4, 22 OCT 2009 to 19 NOV 2009