

RNAV (GPS) RWY 17

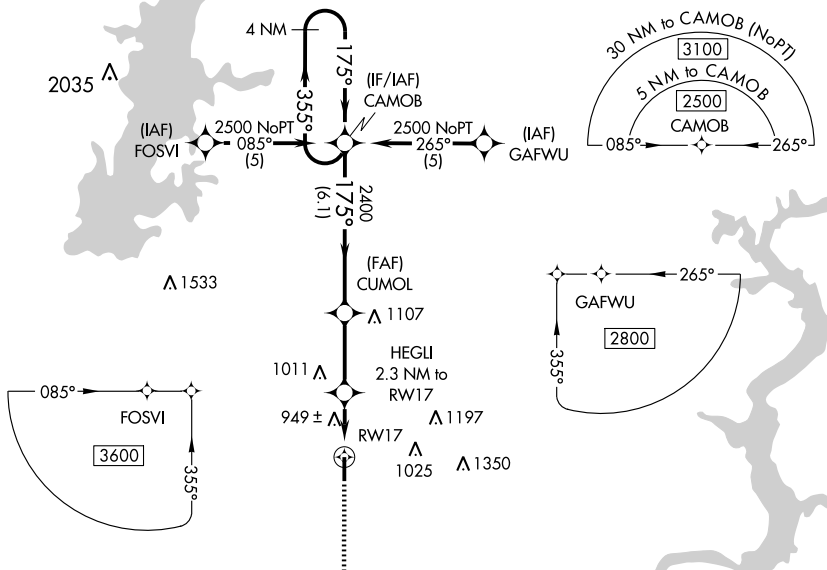
CLAREMORE RGNL (GCM)

WAAS CH 63214 W17A	APP CRS 175°	Rwy Idg 5200 TDZE 718 Apt Elev 733
--	------------------------	---

Baro-VNAV NA when using Tulsa Intl altimeter setting. For uncompensated Baro-VNAV systems, LNAV/VNAV NA below -1.6°C (4°F) or above 54°C (130°F).
 DME/DME RNP-0.3 NA. Visibility reduction by helicopters NA. When local altimeter setting not received, use Tulsa Intl altimeter setting and increase all DA 56 feet and all MDA 60 feet; increase LPV all Cats, LNAV/VNAV all Cats, and LNAV Cat C visibility ¼ mile.

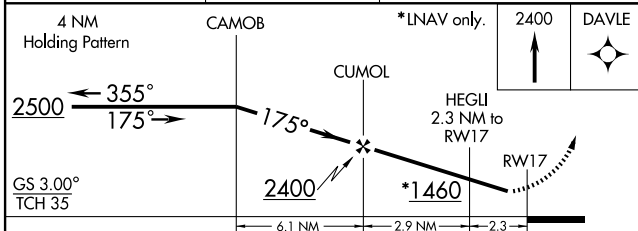
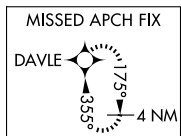
MISSED APPROACH: Climb to 2400 direct DAVLE and hold.

AWOS-3 119.925	TULSA APP CON 119.1 351.8	UNICOM 122.7 (CTAF) ①
--------------------------	-------------------------------------	---------------------------------



SC-1, 22 OCT 2009 to 19 NOV 2009

SC-1, 22 OCT 2009 to 19 NOV 2009



CATEGORY	A	B	C	D
LPV DA	968-1 250 (300-1)			NA
LNAV/VNAV DA	1281-2 563 (600-2)			NA
LNAV MDA	1200-1	482 (500-1)	1200-1¼ 482 (500-1¼)	NA
CIRCLING	1260-1	527 (600-1)	1260-1½ 527 (600-1½)	NA

