

BURLINGTON, KANSAS

AL-9111 (FAA)

# GPS RWY 18

BURLINGTON/COFFEY COUNTY (UKL)

APP CRS	Rwy Idg	<b>5500</b>
<b>175°</b>	TDZE	<b>1173</b>
	Apt Elev	<b>1173</b>

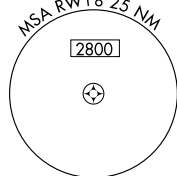
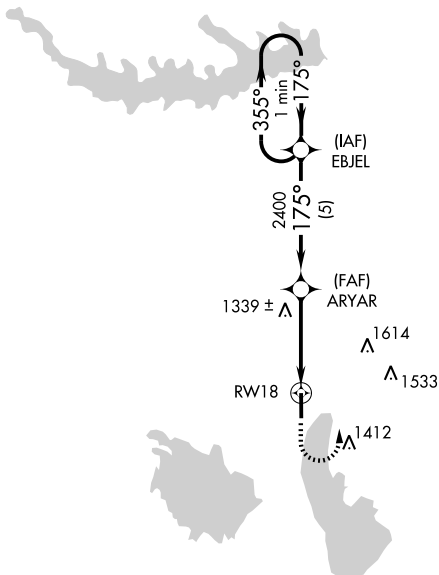
**NA** Obtain local altimeter setting on CTAF; when not received use Emporia altimeter setting. VDP and descent angle/gradient NA with Emporia altimeter setting.

**MISSED APPROACH:** Climb to 2500 then climbing left turn to 3000 direct EBJEL WP and hold.

AWOS-3  
**121.125**

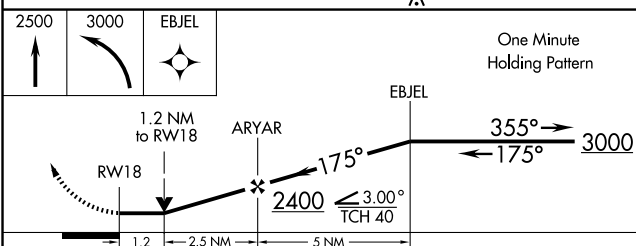
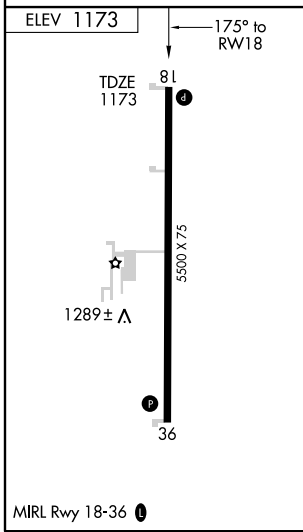
KANSAS CITY CENTER  
**127.725 270.25**

UNICOM  
**123.0 (CTAF) 0**



NC-2, 22 OCT 2009 to 19 NOV 2009

NC-2, 22 OCT 2009 to 19 NOV 2009



CATEGORY	A	B	C	D
S-18	1600-1	427 (500-1)	1600-1¼ 427 (500-1¼)	NA
CIRCLING	1620-1 447 (500-1)	1640-1 467 (500-1)	1640-1½ 467 (500-1½)	NA
<b>EMPORIA ALTIMETER SETTING MINIMUMS</b>				
S-18	1660-1	487 (500-1)	1660-1¼ 487 (500-1¼)	NA
CIRCLING	1680-1	507 (600-1)	1680-1½ 507 (600-1½)	NA

BURLINGTON, KANSAS  
Orig 09295

38°18'N-95°43'W

BURLINGTON/COFFEY COUNTY (UKL)

# GPS RWY 18