

TULARE, CALIFORNIA

AL-9107 (FAA)

VOR/DME or GPS RWY 13

TULARE/MEFFORD FIELD (TLR)

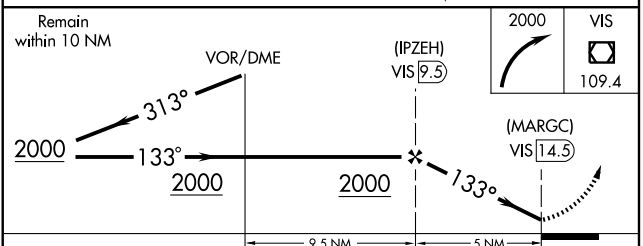
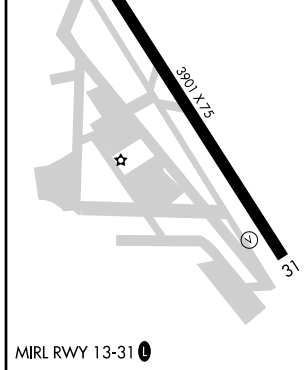
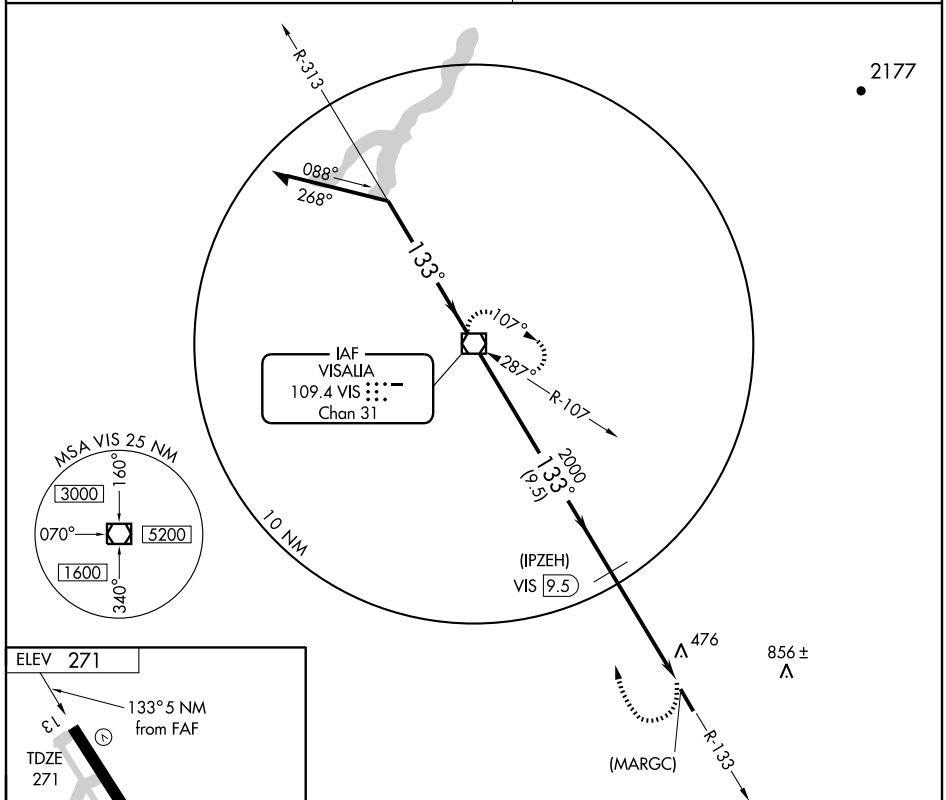
VOR/DME VIS 109.4 Chan 31	APP CRS 133°	Rwy Idg 3914 TDZE 271 Apt Elev 271
---	------------------------	---

▼ Use Visalia altimeter, if not received, use Fresno Air Terminal altimeter setting and increase all MDAs 200 feet.
▲ NA

MISSED APPROACH: Climbing right turn to 2000 direct VIS VOR/DME and hold.

FRESNO APP CON
118.5 268.7

UNICOM
122.7 (CTAF) 0



CATEGORY	A	B	C	D
S-13	920-1	649 (700-1)	920-1½ 649 (700-1½)	NA
CIRCLING	920-1	649 (700-1)	920-1½ 649 (700-1½)	NA

TULARE, CALIFORNIA
Orig 09239

36°09'N-119°20'W

VOR/DME or GPS RWY 13

SW-2, 22 OCT 2009 to 19 NOV 2009

SW-2, 22 OCT 2009 to 19 NOV 2009