

TARBORO, NORTH CAROLINA

AL-9106 (FAA)

# NDB RWY 27

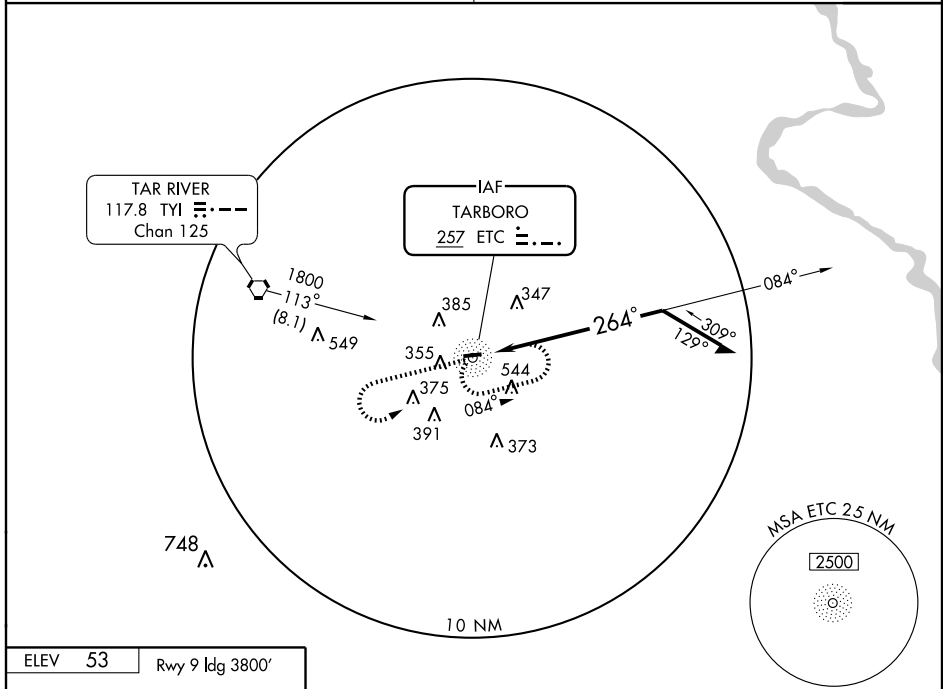
TARBORO-EDGECOMBE (E/T/C)

NDB ETC	APP CRS	Rwy Idg	<b>4000</b>
<b>257</b>	<b>264°</b>	TDZE	<b>50</b>
		Apt Elev	<b>53</b>

**▼** Use Rocky Mount altimeter setting; when not received, use Raleigh-Durham altimeter setting minimums.

**▲ NA** MISSED APPROACH: Climb to 1200 then climbing left turn to 1800 direct ETC NDB and hold.

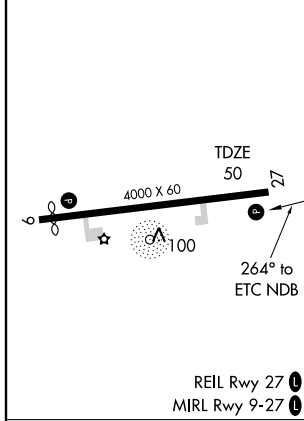
WASHINGTON CENTER <b>118.475 279.65</b>	CTAF <b>122.9</b>
--	----------------------



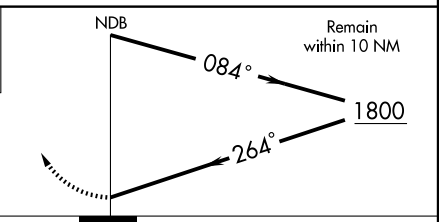
SE-2, 22 OCT 2009 to 19 NOV 2009

SE-2, 22 OCT 2009 to 19 NOV 2009

ELEV 53	Rwy 9 Idg 3800'
---------	-----------------



1200	1800	ETC
↑	↶	○
		257



CATEGORY	A	B	C	D
S-27	760-1	710 (800-1)	760-2 710 (800-2)	760-2¼ 710 (800-2¼)
CIRCLING	760-1	707 (800-1)	760-2 707 (800-2)	920-2¾ 867 (900-2¾)

**RALEIGH-DURHAM ALTIMETER SETTING MINIMUMS**

S-27	980-1¼	930 (1000-1¼)	980-2¾ 930 (1000-2¾)	980-3 930 (1000-3)
CIRCLING	980-1¼	927 (1000-1¼)	980-2¾ 927 (1000-2¾)	1140-3 1087 (1100-3)

TARBORO, NORTH CAROLINA  
Orig 09295

35°56'N-77°33'W

# TARBORO-EDGECOMBE (E/T/C)

## NDB RWY 27