

RNAV (GPS) RWY 34

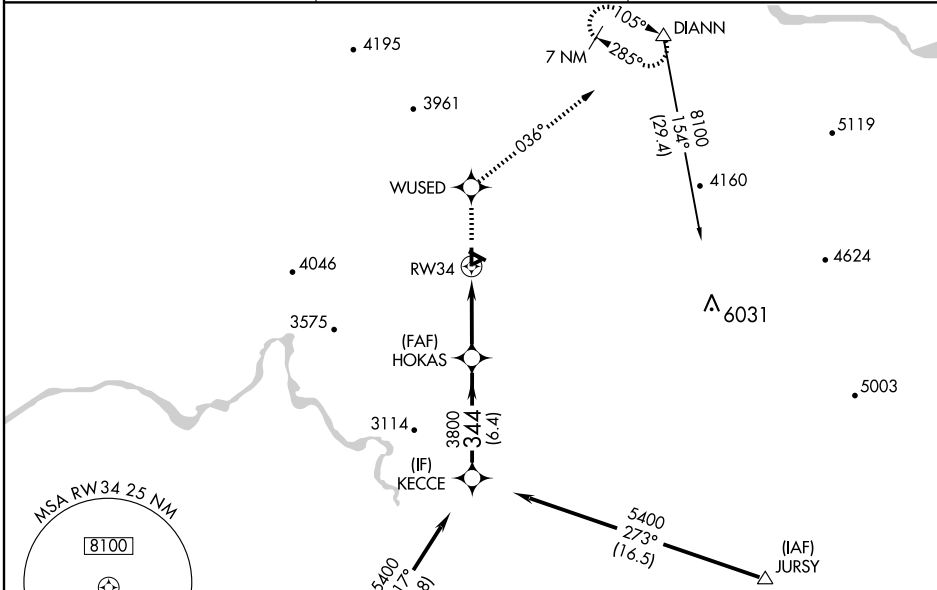
DEER PARK (DEW)

WAAS CH 61306 W34A	APP CRS 344°	Rwy Idg TDZE Apt Elev	6100 2201 2211
---------------------------------	------------------------	-----------------------------	---

⚠ For uncompensated Baro-VNAV systems, LNAV/VNAV NA below -19°C (-2°F) or above 44°C (111°F).
⚠ When local altimeter setting not received, use Spokane Intl altimeter setting and increase all DA/MDAs 80 feet and all visibilities ¼ mile. Circling not authorized west of Rwy 16-34. DME/DME RNP-0.3 NA. VDP and Baro-VNAV NA when using Spokane Intl altimeter setting. Visibility reduction by helicopters NA.

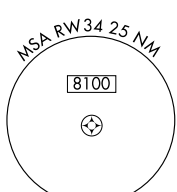
MISSED APPROACH: Climb to 8100 direct WUSED and via 036° track to DIANN and hold, continue climb-in- hold to 8100.

ASOS 135.175	SPOKANE APP CON 123.75 282.25	UNICOM 123.0 (CTAF) 0
------------------------	---	---------------------------------

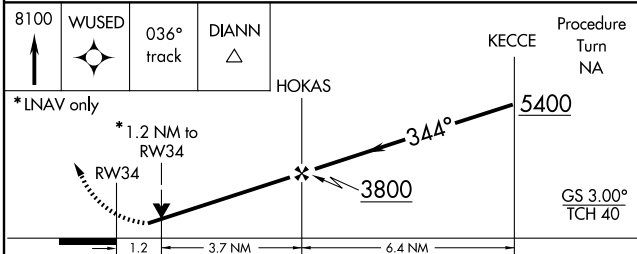


NW-1, 22 OCT 2009 to 19 NOV 2009

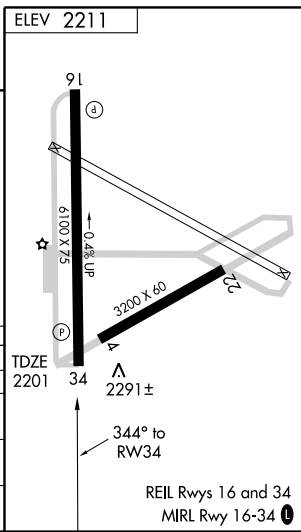
NW-1, 22 OCT 2009 to 19 NOV 2009



ELEV 2211	(IAF) SPOKANE GEG	(IAF) JURSY
-----------	-------------------	-------------



CATEGORY	A	B	C	D
LPV DA	2466-1 265 (300-1)			
LNAV/VNAV DA	2551-1¼ 350 (400-1¼)			
LNAV MDA	2600-1 399 (400-1)		2600-1¼ 399 (400-1¼)	
CIRCLING	2700-1 489 (500-1)	2700-1½ 489 (500-1½)	2780-2 569 (600-2)	



REIL Rws 16 and 34
MRL Rwy 16-34