

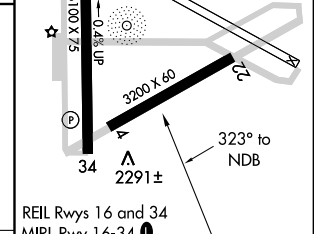
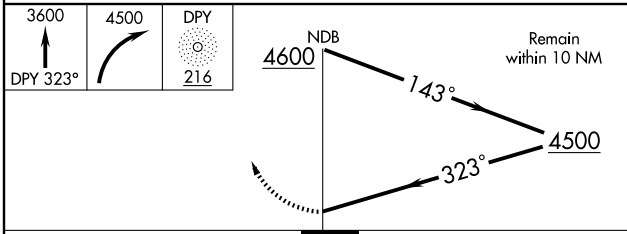
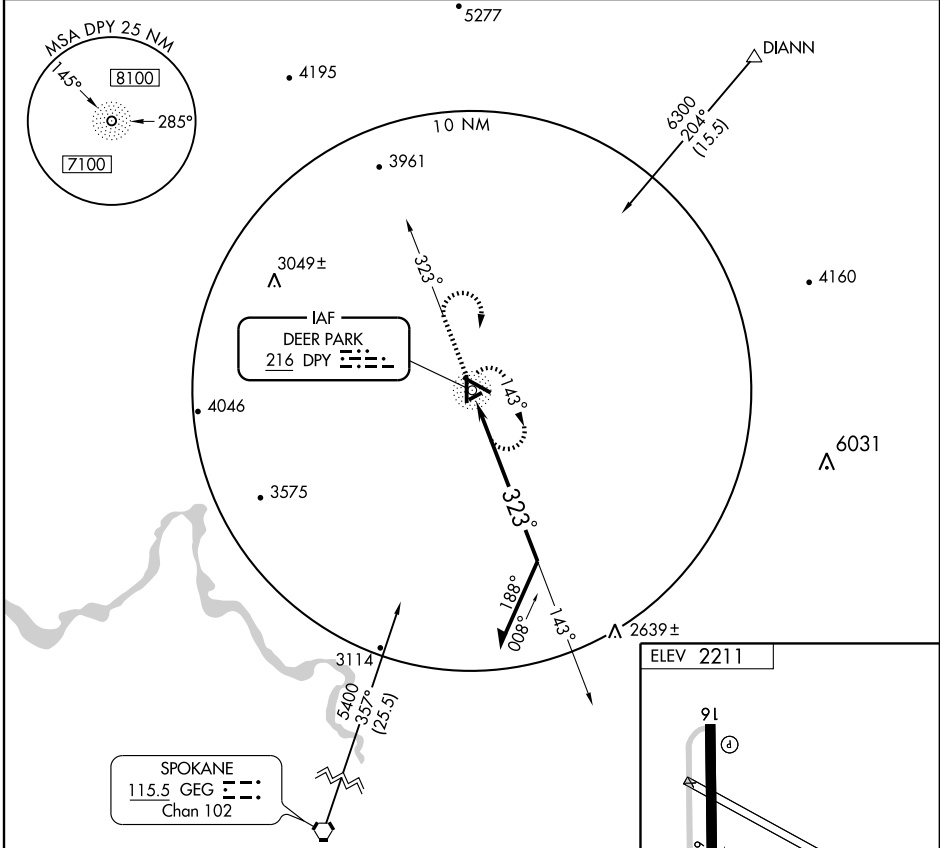
**NDB-A**  
DEER PARK (DEW)

NDB DPY <b>216</b>	APP CRS <b>323°</b>	Rwy Idg TDZE Apt Elev	N/A N/A <b>2211</b>
-----------------------	------------------------	-----------------------------	---------------------------

**NA** Circling NA west of Rwy 16-34.  
When local altimeter setting not received, use Spokane Intl altimeter setting and increase all MDAs 80 feet and all visibilities ¼ mile.

**MISSED APPROACH:** Climb to 3600 via 323° bearing from DPY NDB then climbing right turn to 4500 direct DPY NDB and hold.

ASOS <b>135.175</b>	SPOKANE APP CON <b>123.75 282.25</b>	UNICOM <b>123.0 (CTAF)</b>
------------------------	---	-------------------------------



CATEGORY	A	B	C	D	Knots	60	90	120	150	180
CIRCLING	3000-1 789 (800-1)	3000-1¼ 789 (800-1¼)	3000-2¼ 789 (800-2¼)	3000-2½ 789 (800-2½)	Min:Sec					

NW-1, 22 OCT 2009 to 19 NOV 2009

NW-1, 22 OCT 2009 to 19 NOV 2009