

RNAV (GPS) RWY 32

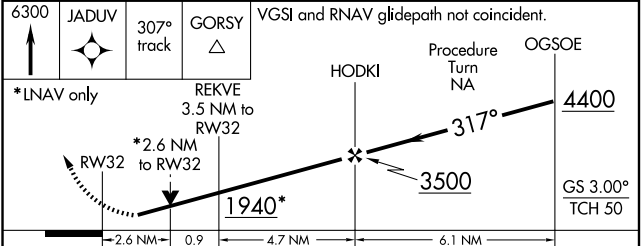
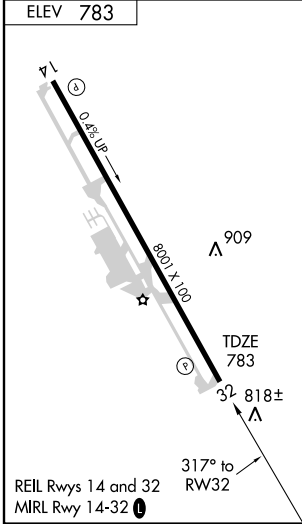
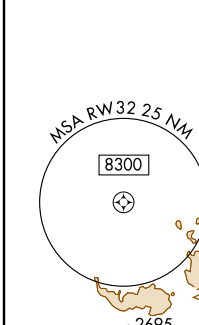
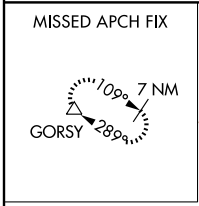
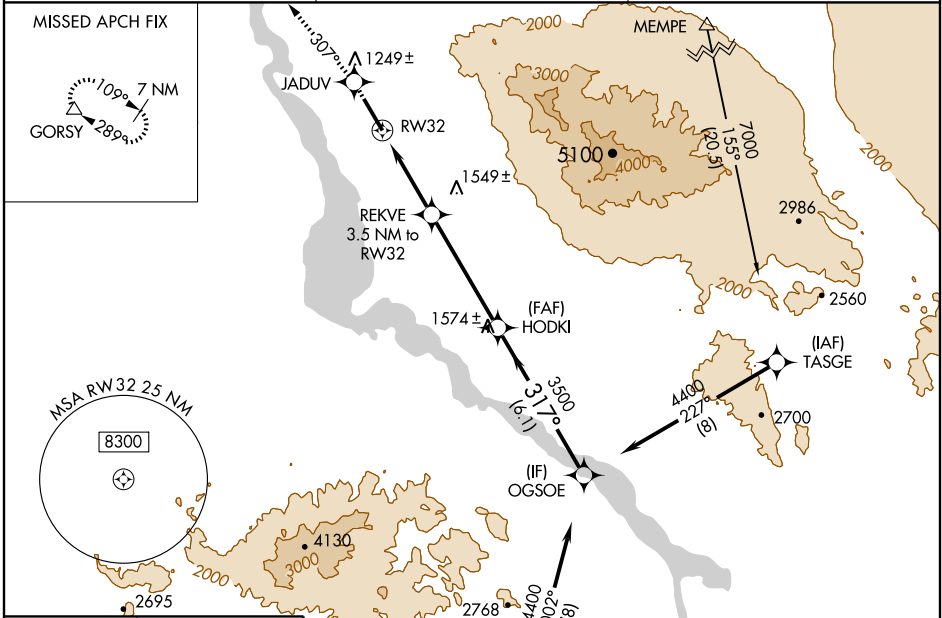
LAKE HAVASU CITY (HII)

WAAS CH 49110 W32A	APP CRS 317°	Rwy Idg TDZE Apt Elev	8001 783 783
--	------------------------	-----------------------------	---

NA DME/DME RNP-0.3 NA. Visibility reduction by helicopters NA. When local altimeter setting not received, use Needles altimeter setting and increase all DA/MDA 80 feet and all visibilities ½ mile. VDP NA when using Needles altimeter setting. Circling NA northeast of Rwy 14-32.

MISSED APPROACH: Climb to 6300 direct JADUV and via 307° track to GORSY and hold, continue climb-in-hold to 6300.

AWOS-3 119.025 364	LOS ANGELES CENTER 134.65 314.2	UNICOM 122.7 (CTAF)
------------------------------	---	-------------------------------



CATEGORY	A	B	C	D
LPV DA		1265-1¾	482 (500-1¾)	
LNAV MDA	1660-1 877 (900-1)	1660-1¼ 877 (900-1¼)	1660-2½ 877 (900-2½)	1660-2¾ 877 (900-2¾)
CIRCLING	1660-1 877 (900-1)	1660-1¼ 877 (900-1¼)	1660-2½ 877 (900-2½)	1660-2¾ 877 (900-2¾)

SW-4, 22 OCT 2009 to 19 NOV 2009

SW-4, 22 OCT 2009 to 19 NOV 2009