

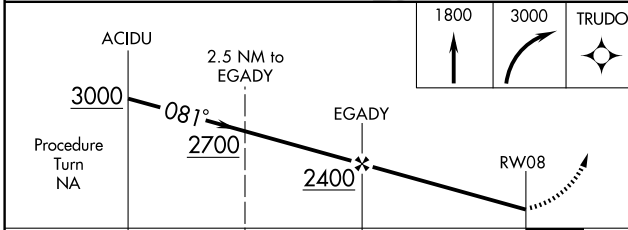
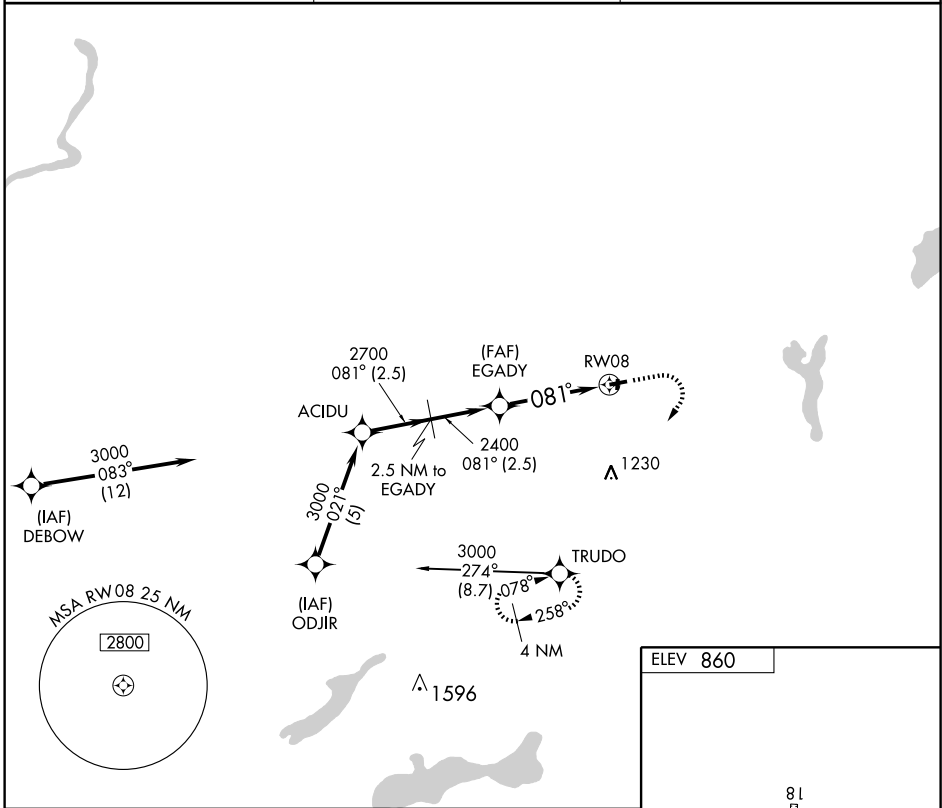
GPS RWY 8

EAST TROY MUNI (57C)

APP CRS	Rwy Idg	3900
081°	TDZE	851
	Apt Elev	860

▲ NA Use Milwaukee (General Mitchell Intl) altimeter setting. **MISSED APPROACH:** Climb to 1800 then climbing right turn to 3000 direct TRUDO WP and hold.

GCO 121.725	MILWAUKEE APP CON 125.35 307.0	UNICOM 123.0 (CTAF) 0
-----------------------	--	---------------------------------



CATEGORY	A	B	C	D
S-8	1380-1 529 (600-1)		1380-1½ 529 (600-1½)	1380-1¾ 529 (600-1¾)
CIRCLING	1380-1 520 (600-1)		1380-1½ 520 (600-1½)	1420-2 560 (600-2)

ELEV 860

TDZE 851

0.4% UP

0.4% UP

2446 X 75

36

81

3900 X 75

26

MIRL Rwy 8-26 0

REIL Rws 8 and 26 0

EC-3, 22 OCT 2009 to 19 NOV 2009

EC-3, 22 OCT 2009 to 19 NOV 2009