

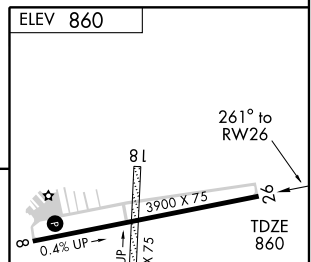
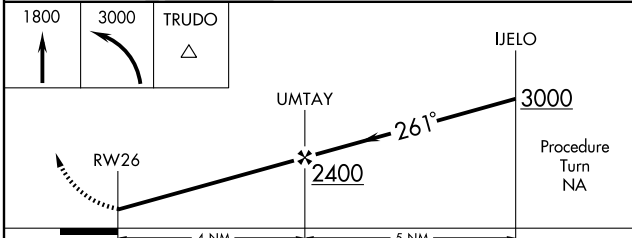
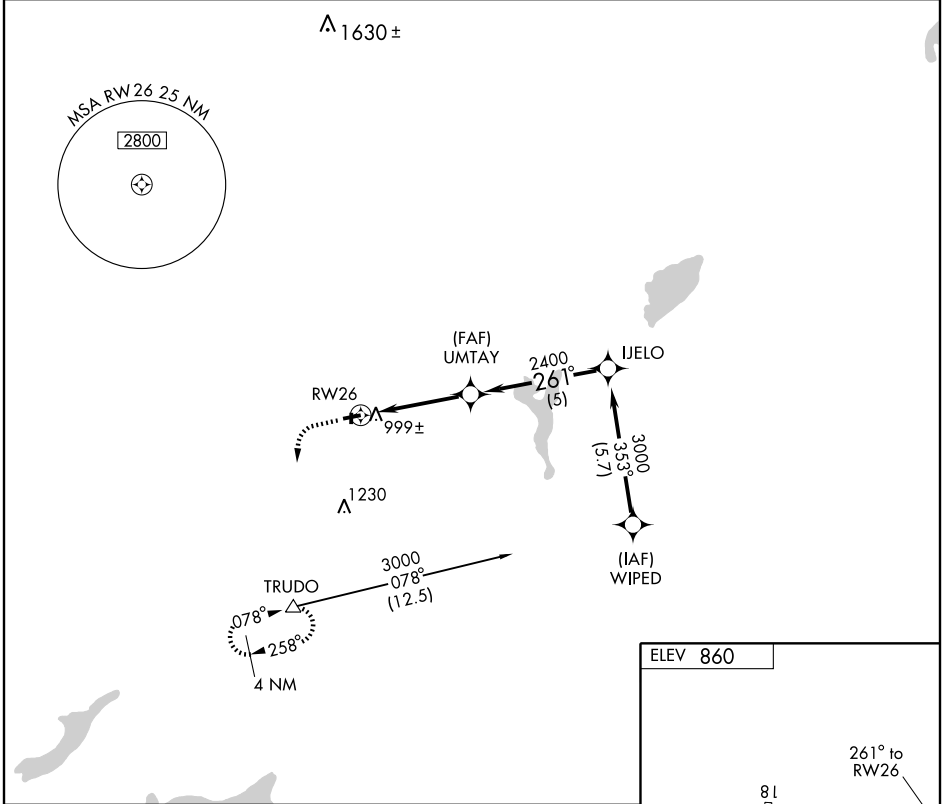
GPS RWY 26

EAST TROY MUNI (57C)

APP CRS	Rwy Idg	3900
261°	TDZE	860
	Apt Elev	860

⚠ NA Use Milwaukee (General Mitchell Intl) altimeter setting. MISSED APPROACH: Climb to 1800 then climbing left turn to 3000 direct TRUDO Int and hold.

GCO 121.725	MILWAUKEE APP CON 125.35 307.0	UNICOM 123.0 (CTAF) 0
-----------------------	--	---------------------------------



CATEGORY	A	B	C	D
S-26	1340-1 480 (500-1)		1340-1½ 480 (500-1¼)	1340-1½ 480 (500-1½)
CIRCLING	1380-1 520 (600-1)		1380-1½ 520 (600-1½)	1420-2 560 (600-2)

MIRL Rwy 8-26 0
REIL Rws 8 and 26 0

EC-3, 22 OCT 2009 to 19 NOV 2009

EC-3, 22 OCT 2009 to 19 NOV 2009