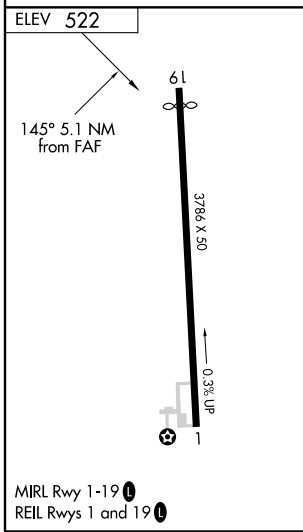
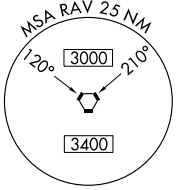
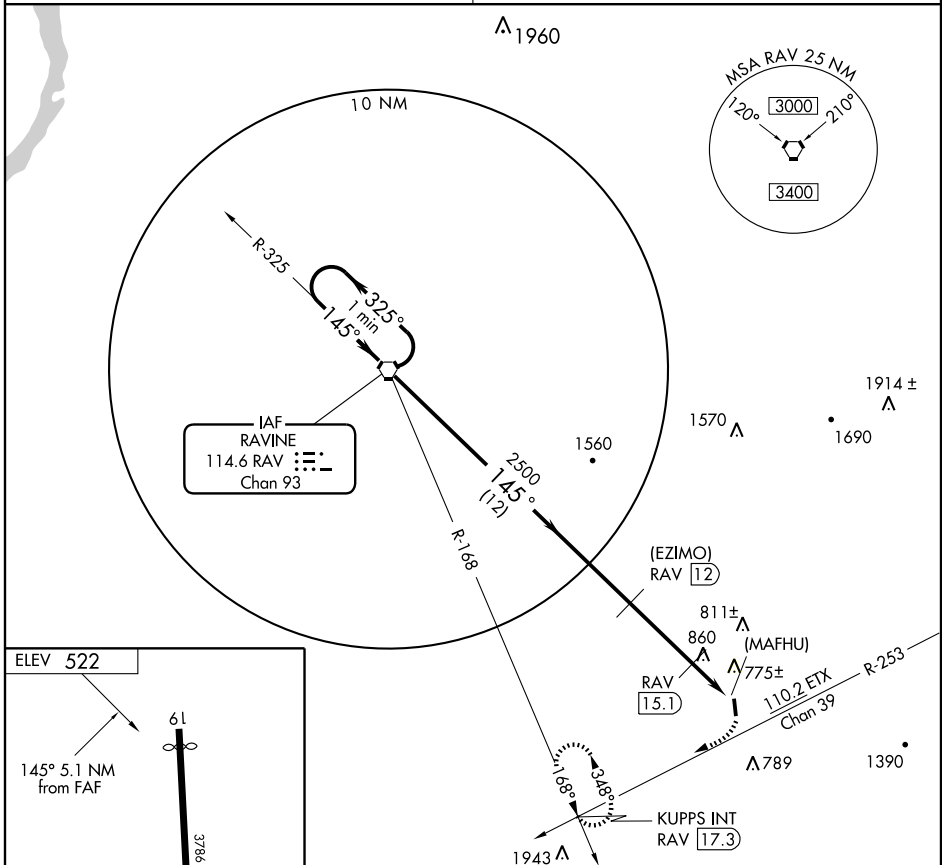


VORTAC RAV <b>114.6</b> Chan <b>93</b>	APP CRS <b>145°</b>	Rwy Idg TDZE Apt Elev <b>N/A</b> <b>N/A</b> <b>522</b>
--	------------------------	---

# VOR/DME or GPS-A

MYERSTOWN/ DECK (9D4)

<p><b>▼</b> Use Harrisburg Intl, PA altimeter setting. <b>▲ NA</b> If not received, procedure not authorized.</p>	<p>MISSED APPROACH: Climbing right turn to 3000, intercept the ETX VORTAC R-253 to KUPPS Int and hold.</p>
<p>HARRISBURG APP CON <b>118.25 269.45</b></p>	<p>UNICOM <b>122.8 (CTAF)</b></p>



One Minute Holding Pattern	VORTAC		3000	KUPPS INT
	3500 ← 325°	→ 145°	ETX R-253 110.2	
2500		(EZIMO) RAV 12	RAV 15.1 (MAFHU) RAV 17.1	KUPPS INT
1760		12 NM	3.1 NM	
CATEGORY	A	B	C	D
CIRCLING	1140-1	618 (700-1)	1140-1¾ 618 (700-1¾)	NA

NE-4, 22 OCT 2009 to 19 NOV 2009

NE-4, 22 OCT 2009 to 19 NOV 2009