

# RNAV (GPS) RWY 15

PRINCETON MUNI (PNM)

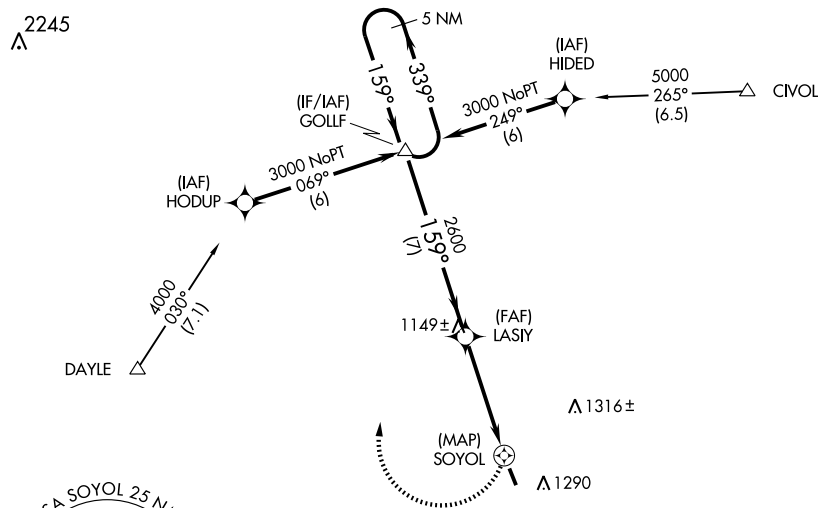
APP CRS <b>159°</b>	Rwy Idg TDZE Apt Elev	<b>3900</b> <b>979</b> <b>979</b>
------------------------	-----------------------------	---

When VGSI inoperative, procedure NA at night.  
DME/DME RNP-0.3 NA.  
Circling Rwy 33 NA at night.

MISSED APPROACH: Climbing right turn to 3000 direct GOLLF and hold.

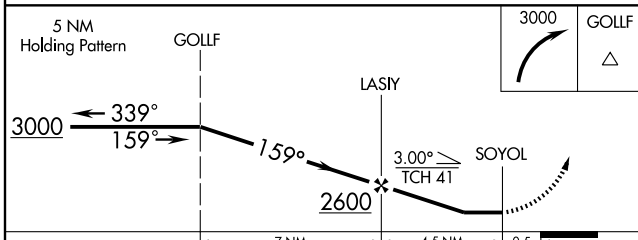
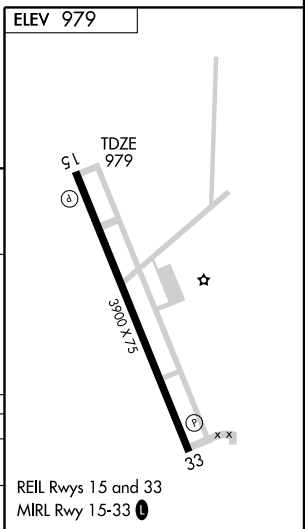
AWOS-3 <b>119.025</b>	MINNEAPOLIS CENTER <b>121.05 397.9</b>	PRINCETON RADIO <b>122.2</b>	UNICOM <b>123.0 (CTAF)</b>
--------------------------	---	---------------------------------	-------------------------------

Procedure NA for arrivals on V413 southbound.



NC-1, 22 OCT 2009 to 19 NOV 2009

NC-1, 22 OCT 2009 to 19 NOV 2009



CATEGORY	A	B	C	D
LNVA MDA	1380-1	401 (500-1)	1380-1¼ 401 (500-1¼)	NA
CIRCLING	1640-1	661 (700-1)	1640-1¾ 661 (700-1¾)	NA

REIL Rwy 15 and 33  
MIRL Rwy 15-33