

CRYSTAL RIVER, FLORIDA

AL-9089 (FAA)

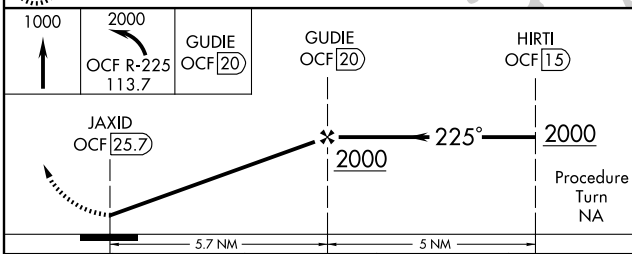
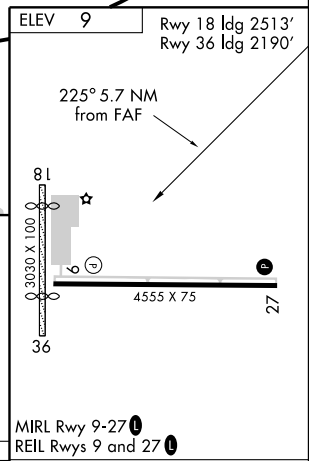
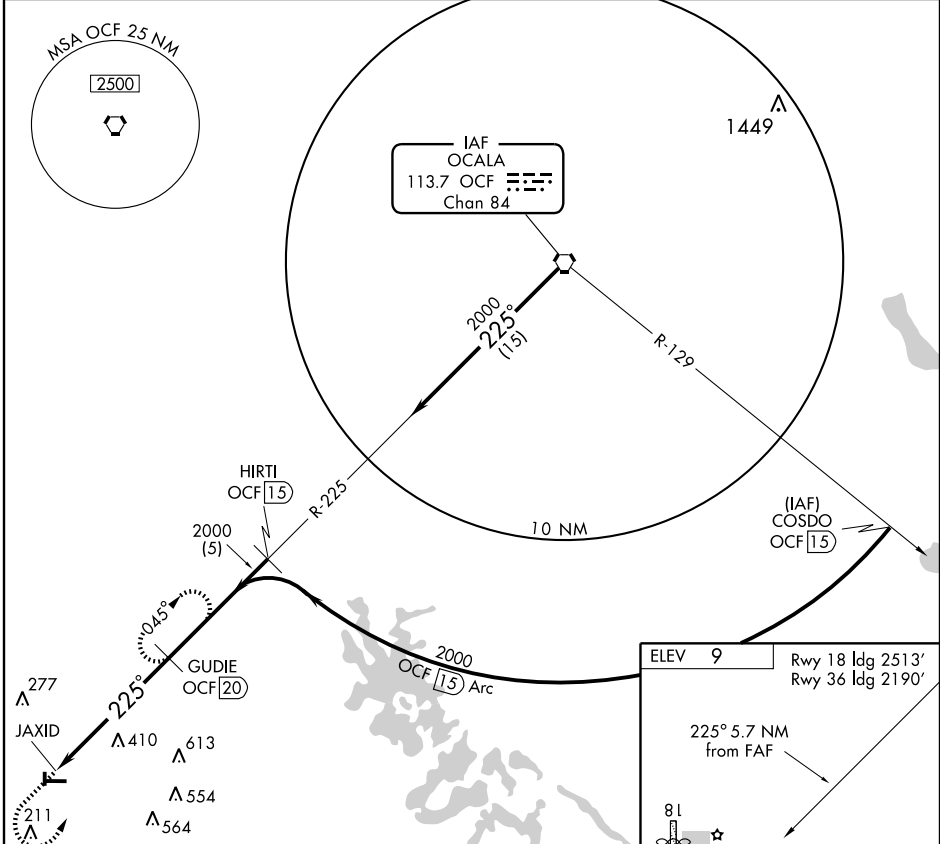
VORTAC OCF 113.7 Chan 84	APP CRS 225°	Rwy ldg TDZE Apt Elev 9	N/A N/A 9
--	------------------------	---	------------------------

VOR/DME or GPS-A

CRYSTAL RIVER (CGC)

▲ NA If local altimeter setting not received, use Ocala altimeter setting and increase all MDAs 80 feet. **MISSED APPROACH:** Climb to 1000 then climbing left turn to 2000 via the OCF R-225 to GUDIE 20 DME and hold.

AWOS-3 118.325	JACKSONVILLE APP CON 118.6 251.15	UNICOM 122.725 (CTAF) 0
--------------------------	---	--



CATEGORY	A	B	C	D	Knots	60	90	120	150	180
CIRCLING	720-1 711 (800-1)	720-1¼ 711 (800-1¼)	720-2 711 (800-2)	760-2½ 751 (800-2½)	Min:Sec					

CRYSTAL RIVER, FLORIDA
Amdt 1 05244

28°52'N-82°34'W

VOR/DME or GPS-A

SE-3, 22 OCT 2009 to 19 NOV 2009

SE-3, 22 OCT 2009 to 19 NOV 2009