

# RNAV (GPS) RWY 32

HAZEN/MERCER COUNTY RGNL (HZE)

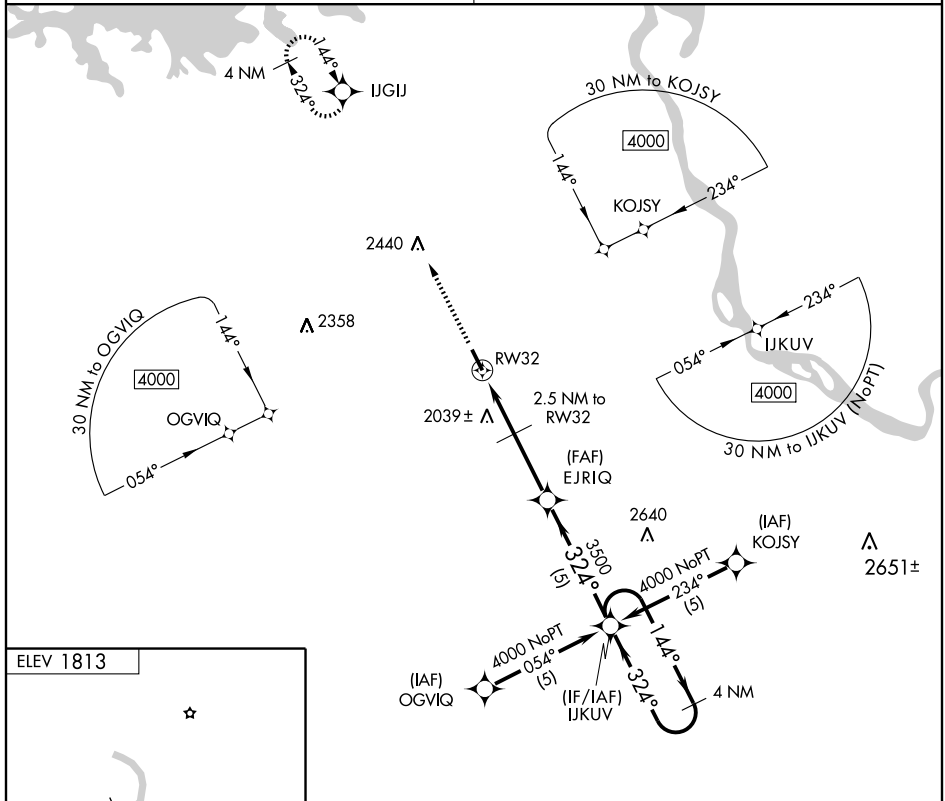
APP CRS <b>324°</b>	Rwy Idg <b>5000</b>
	TDZE <b>1813</b>
	Apt Elev <b>1813</b>

**NA** Use Bismarck, ND altimeter setting.  
GPS or RNP-0.3 required.  
DME/DME RNP-0.3 NA.

MISSED APPROACH: Climb to 4000 direct IJGIJ WP and hold.

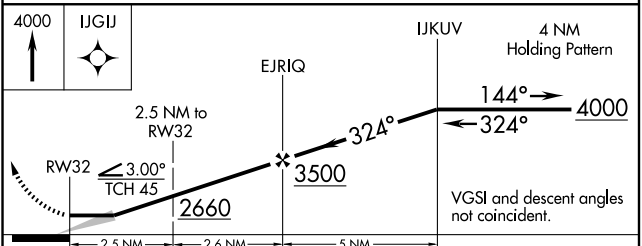
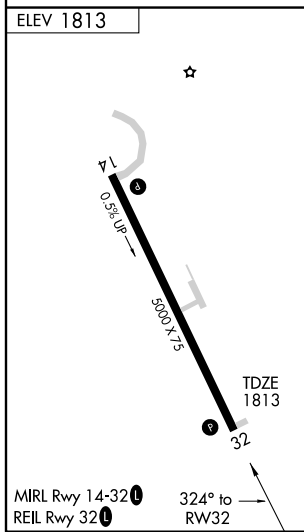
MINNEAPOLIS CENTER  
**124.25 380.3**

CTAF  
**122.8**



NC-1, 22 OCT 2009 to 19 NOV 2009

NC-1, 22 OCT 2009 to 19 NOV 2009



CATEGORY	A	B	C	D
LNAV MDA	2420-1	607 (700-1)	2420-1 $\frac{3}{4}$ 607 (700-1 $\frac{3}{4}$ )	NA
CIRCLING	2440-1 627 (700-1)	2460-1 647 (700-1)	2460-1 $\frac{3}{4}$ 647 (700-1 $\frac{3}{4}$ )	NA