

RNAV (GPS) RWY 14

HAZEN/MERCER COUNTY RGNL (HZE)

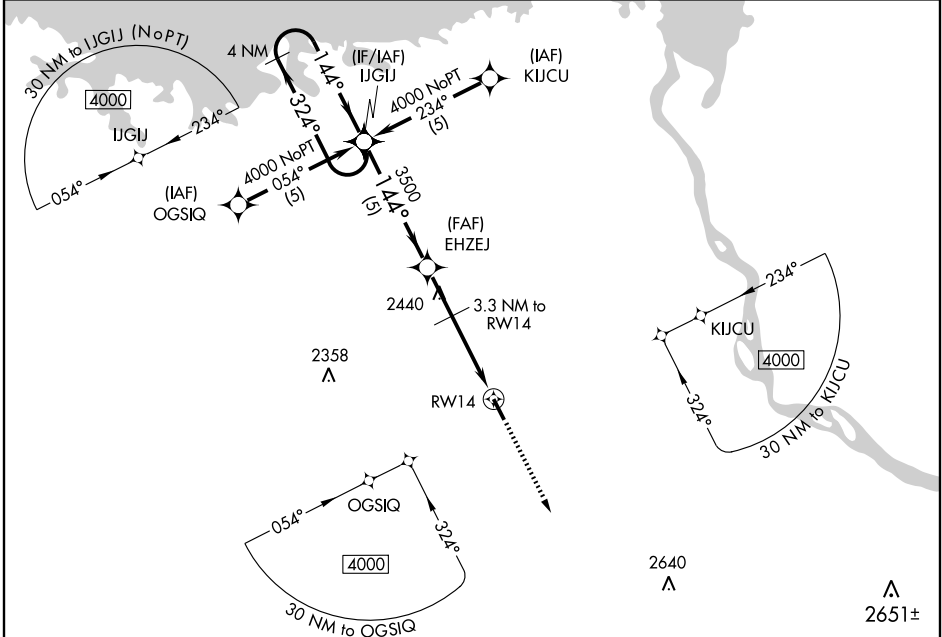
APP CRS 144°	Rwy Idg 5000
	TDZE 1786
	Apt Elev 1813

▲ NA Use Bismarck, ND altimeter setting. GPS or RNP 0.3-required. DME/DME RNP-0.3 NA.

MISSED APPROACH: Climb to 4000 direct IJKUV WP and hold.

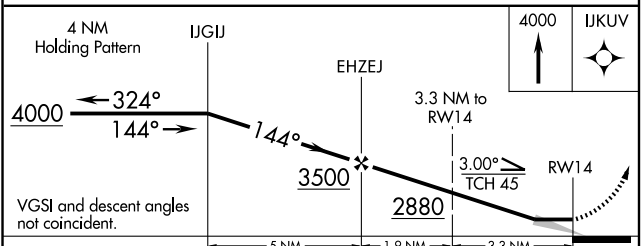
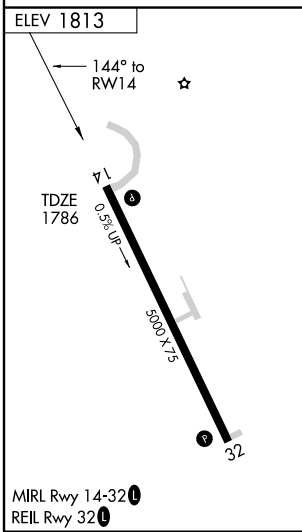
MINNEAPOLIS CENTER
124.25 380.3

CTAF
122.8



NC-1, 22 OCT 2009 to 19 NOV 2009

NC-1, 22 OCT 2009 to 19 NOV 2009



CATEGORY	A	B	C	D
LNAV MDA	2400-1	614 (600-1)	2400-1¾ 614 (600-1¾)	NA
CIRCLING	2440-1 627 (700-1)	2460-1 647 (700-1)	2460-1¾ 647 (700-1¾)	NA