

**RNAV (GPS)-B**  
SARATOGA/ SHIVELY FIELD (S.A.A.)

APP CRS	Rwy Idg	N/A
151°	TDZE	N/A
	Apt Elev	7012

**NA** DME/DME RNP -0.3 NA. If local altimeter setting not received, use Rawlins altimeter setting and increase all MDAs 280 feet.

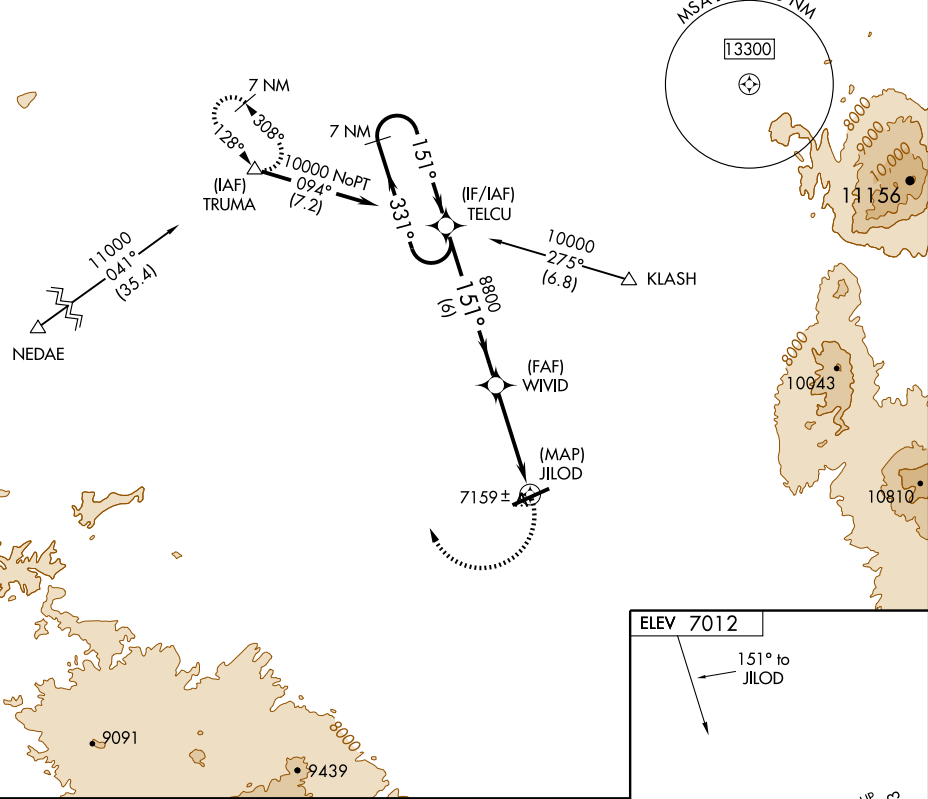
**MISSED APPROACH:** Climbing right turn to 10,000 direct TRUMA and hold.

AWOS-3  
**118.175**

DENVER CENTER  
**132.1 254.35**

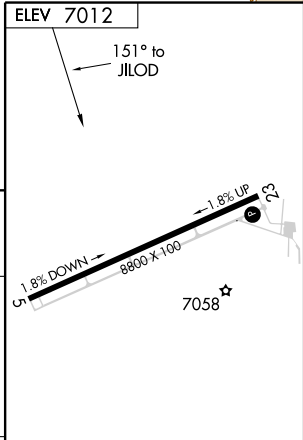
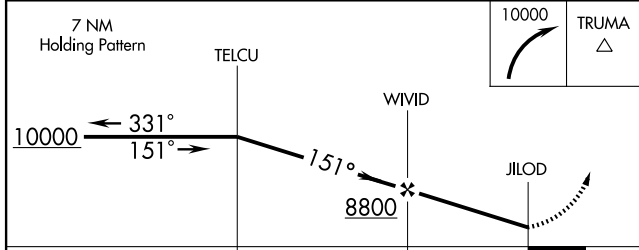
UNICOM  
**122.8 (CTAF)**

Procedure NA for arrival at NEDAE via V26 southbound.



NW-1, 22 OCT 2009 to 19 NOV 2009

NW-1, 22 OCT 2009 to 19 NOV 2009



CATEGORY	A	B	C	D
CIRCLING	7600-1	588 (600-1)	7620-1¾ 608 (700-1¾)	7620-2 608 (700-2)

REIL Rwy 23 **0**  
MRL Rwy 5-23 **0**