

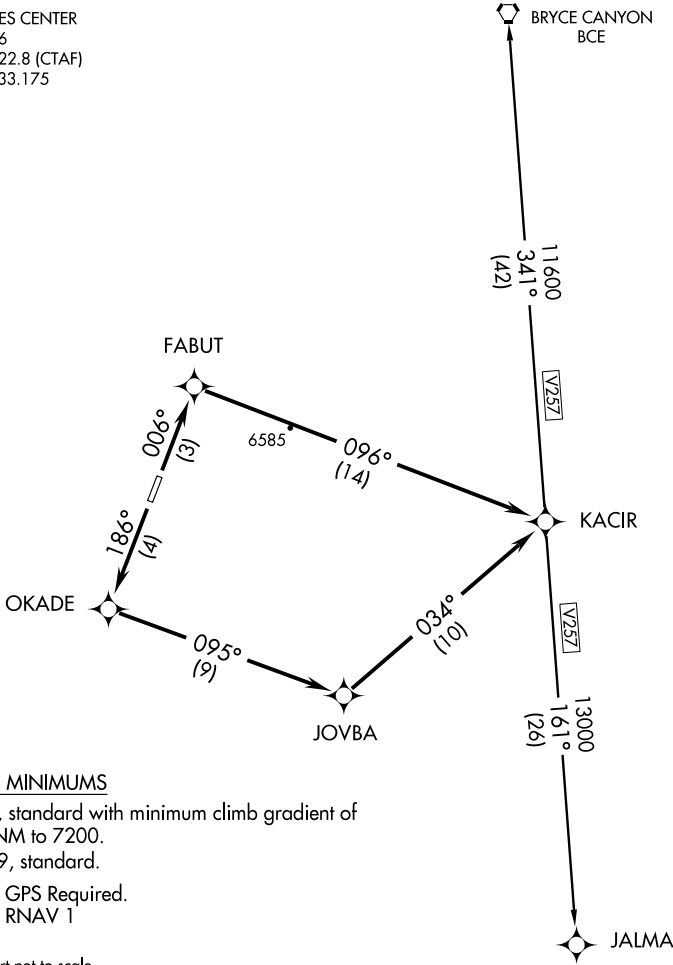
(KACIR1.KACIR) 07074

# KACIR ONE DEPARTURE (RNAV)

SL-9072 (FAA)

KANAB MUNI (KNB)  
KANAB, UTAH

LOS ANGELES CENTER  
124.2 343.6  
UNICOM 122.8 (CTAF)  
AWOS-3 133.175



### TAKE-OFF MINIMUMS

Runway 1, standard with minimum climb gradient of 316' per NM to 7200.

Runway 19, standard.

NOTE: 1. GPS Required.  
2. RNAV 1

NOTE: Chart not to scale.

### DEPARTURE ROUTE DESCRIPTION

TAKE-OFF RUNWAY 1: Climb via 006° course to FABUT WP, then via 096° course to KACIR WP, then via assigned transition/altitude.

TAKE-OFF RUNWAY 19: Climb via 186° course to OKADE WP, then via 095° course to JOVBA WP, then via 034° to KACIR WP, then via assigned transition/altitude.

BRYCE CANYON TRANSITION (KACIR1.BCE)

JALMA TRANSITION (KACIR1.JALMA)

# KACIR ONE DEPARTURE (RNAV)

(KACIR1.KACIR) 07074

KANAB, UTAH  
KANAB MUNI (KNB)

SW-4, 22 OCT 2009 to 19 NOV 2009

SW-4, 22 OCT 2009 to 19 NOV 2009