

NDB RWY 2

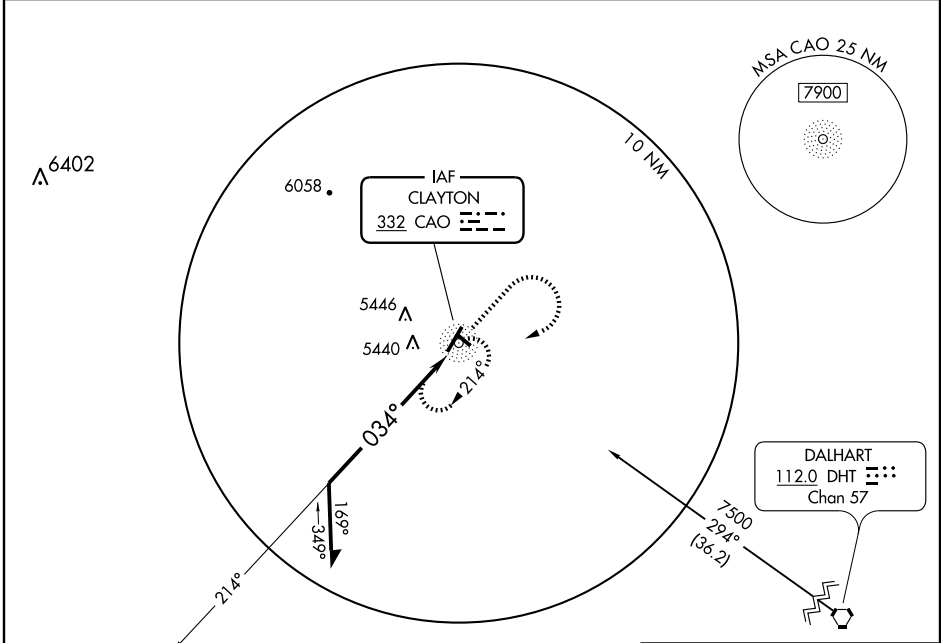
CLAYTON MUNI AIRPARK (CAO)

NDB CAO 332	APP CRS 034°	Rwy ldg 5920 TDZE 4965 Apt Elev 4965
-----------------------	------------------------	---

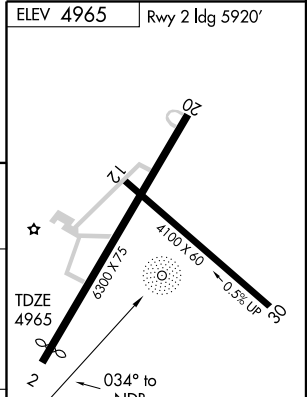
⚠ Circling not authorized west of Rwys 2 and 12.
⚠ If local altimeter setting not received, use Dalhart Muni, TX altimeter setting and increase all MDAs 240 feet.

MISSED APPROACH: Climb to 6200, then climbing right turn to 7000 direct CAO NDB and hold.

ASOS 120.625	ALBUQUERQUE CENTER 127.85 285.475	UNICOM 122.8 (CTAF) 📞
------------------------	---	--



Remain within 10 NM	6200	7000	CAO
	↑	↷	📍 332



CATEGORY	A	B	C	D
S-2	5800-1 835 (900-1)	5800-1¼ 835 (900-1¼)	5800-2½ 835 (900-2½)	5800-2¾ 835 (900-2¾)
CIRCLING	5800-1 835 (900-1)	5800-1¼ 835 (900-1¼)	5800-2½ 835 (900-2½)	5800-2¾ 835 (900-2¾)

MRL Rwys 2-20 and 12-30 📞	Knots	60	90	120	150	180
	Min:Sec					

SW-1, 22 OCT 2009 to 19 NOV 2009

SW-1, 22 OCT 2009 to 19 NOV 2009