

# RNAV (GPS) RWY 7

GRANGEVILLE/IDAHO COUNTY (S80)

APP CRS	Rwy Idg	<b>5001</b>
<b>073°</b>	TDZE	<b>3302</b>
	Apt Elev	<b>3314</b>

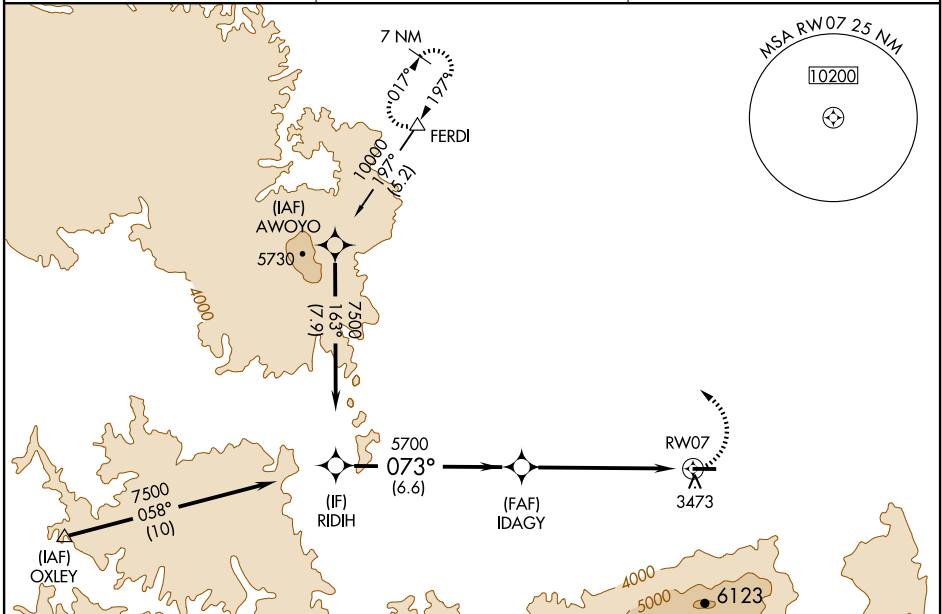
**NA** Circling NA south of Rwy 7-25.  
 DME/DME RNP-0.3 NA.  
 Visibility reduction by helicopters NA.  
 Use Lewiston-Nez Perce County altimeter setting; when not received, use Pullman/Moscow Rgnl altimeter setting and increase all MDA 40 feet.

MISSED APPROACH: Climbing left turn to 7200 direct FERDI and hold.

LEWISTON-NEZ PERCE COUNTY ASOS  
**135.575**

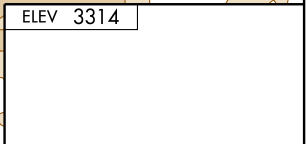
SEATTLE CENTER  
**123.95 282.3**

CTAF  
**122.9**



NW-1, 22 OCT 2009 to 19 NOV 2009

NW-1, 22 OCT 2009 to 19 NOV 2009



	RIDIH	IDAGY	FERDI
Procedure Turn NA	7500	5700	7200
	073°	3.65° TCH 45	
	6.6 NM	6.1 NM	

CATEGORY	A	B	C	D
RNAV MDA	4660-1¼ 1358 (1400-1¼)	4660-1½ 1358 (1400-1½)	4660-3 1358 (1400-3)	NA
CIRCLING	4660-1¼ 1346 (1400-1¼)	4660-1½ 1346 (1400-1½)	4660-3 1346 (1400-3)	NA

ELEV 3314

TDZE 3302

073° to RWY 7

MIRL Rwy 7-25  
 REIL Rwy 7