

RNAV (GPS) RWY 36

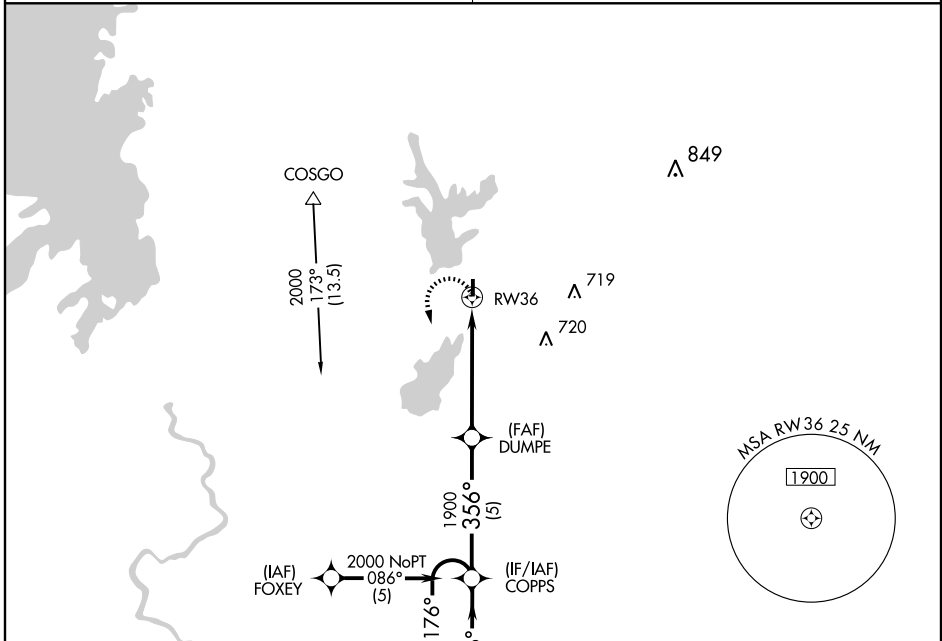
LEESVILLE (L39)

APP CRS 356°	Rwy Idg 3807
	TDZE 280
	Apt Elev 280

NA Use Polk AAF altimeter setting.
GPS or RNP-0.3 REQUIRED. DME/DME RNP-0.3 NA.

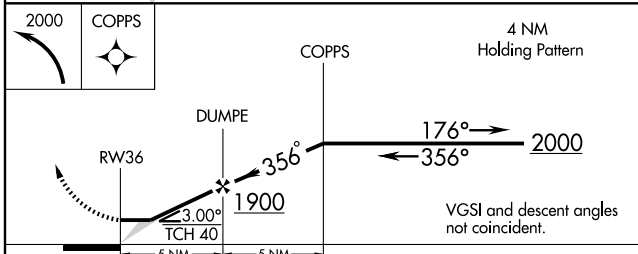
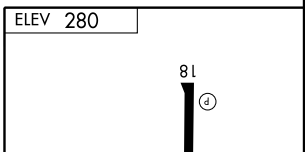
MISSED APPROACH: Climbing left turn to 2000 direct COPPS and hold.

POLK APP CON 123.7 254.8	UNICOM 122.8 (CTAF)
------------------------------------	-------------------------------

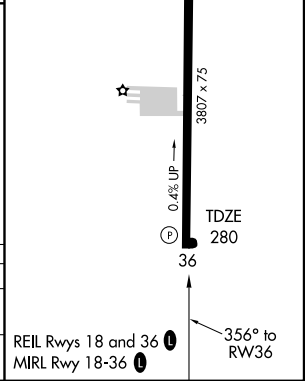


SC-4, 22 OCT 2009 to 19 NOV 2009

SC-4, 22 OCT 2009 to 19 NOV 2009



CATEGORY	A	B	C	D
LNVA MDA	720-1	440 (500-1)	720-1½ 440 (500-1½)	NA
CIRCLING	760-1 480 (500-1)	780-1 500 (500-1)	780-1½ 500 (500-1½)	NA



RNAV (GPS) RWY 36

LEESVILLE (L39)