

LEESVILLE, LOUISIANA

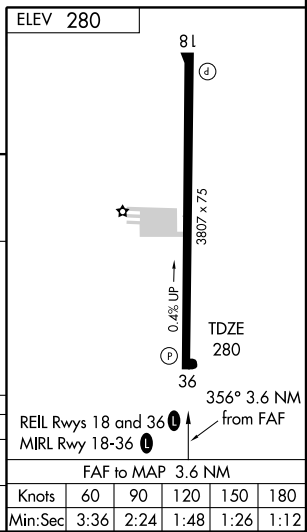
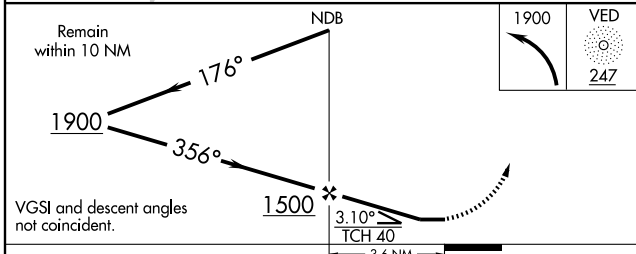
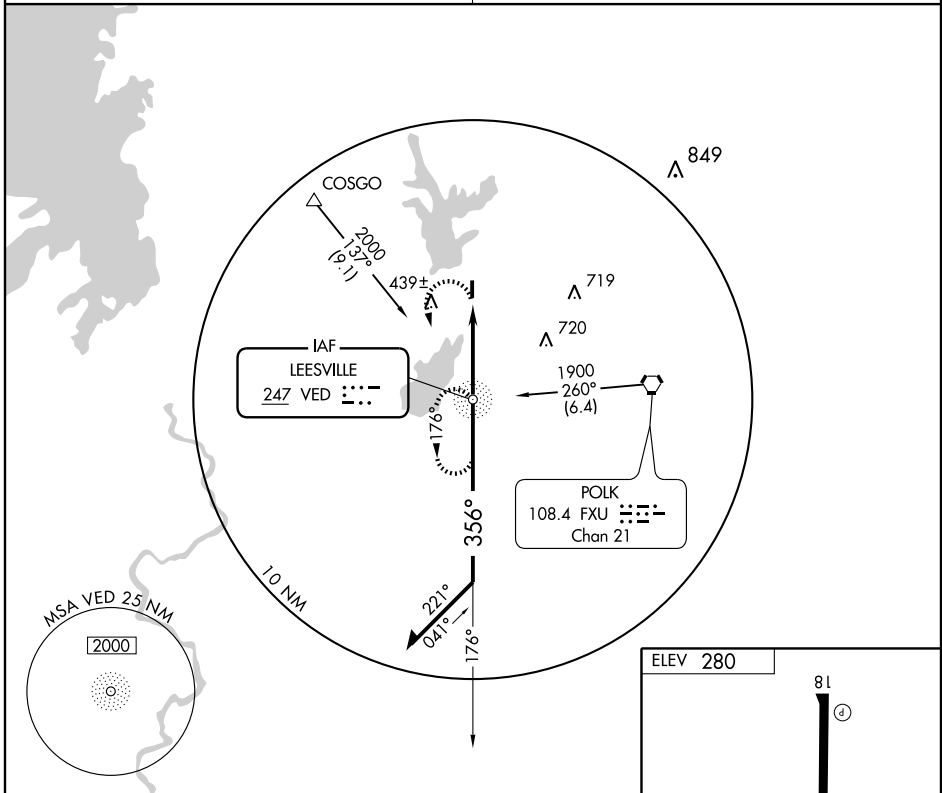
AL-9048 (FAA)

NDB RWY 36

LEESVILLE (L39)

NDB VED 247	APP CRS 356°	Rwy Idg TDZE Apt Elev	3807 280 280
-----------------------	------------------------	-----------------------------	---

<p>▲ NA Use Polk AAF altimeter setting.</p>	<p>MISSED APPROACH: Climbing left turn to 1900 direct VED NDB and hold.</p>
<p>POLK APP CON 123.7 254.8</p>	<p>UNICOM 122.8 (CTAF) 0</p>



CATEGORY	A	B	C	D
S-36	780-1	500 (500-1)	780-1½ 500 (500-1¼)	NA
CIRCLING	780-1	500 (500-1)	780-1½ 500 (500-1½)	NA

ELEV 280	81
3807 x 75	36
0.4% UP	356° 3.6 NM
TDZE 280	from FAF
REIL Rwy 18 and 36	36
MIRL Rwy 18-36	0
FAF to MAP 3.6 NM	
Knots	60 90 120 150 180
Min:Sec	3:36 2:24 1:48 1:26 1:12

LEESVILLE, LOUISIANA
Amdt 1 09183

31°10'N - 93°21'W

LEESVILLE (L39) NDB RWY 36

SC-4, 22 OCT 2009 to 19 NOV 2009

SC-4, 22 OCT 2009 to 19 NOV 2009