

# RNAV (GPS) RWY 30

LIVINGSTON MUNI (00R)

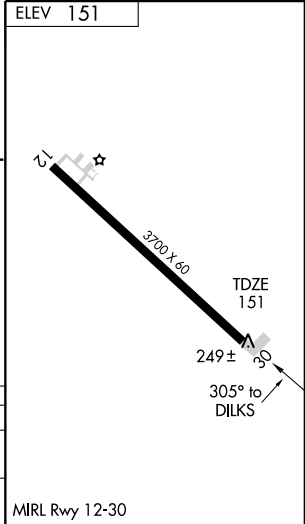
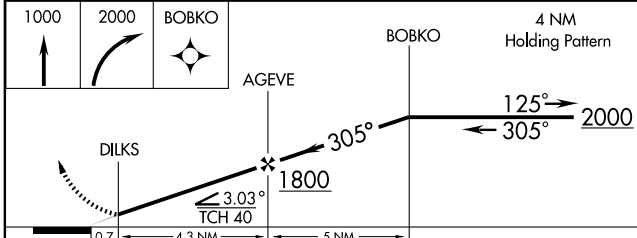
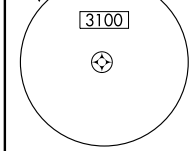
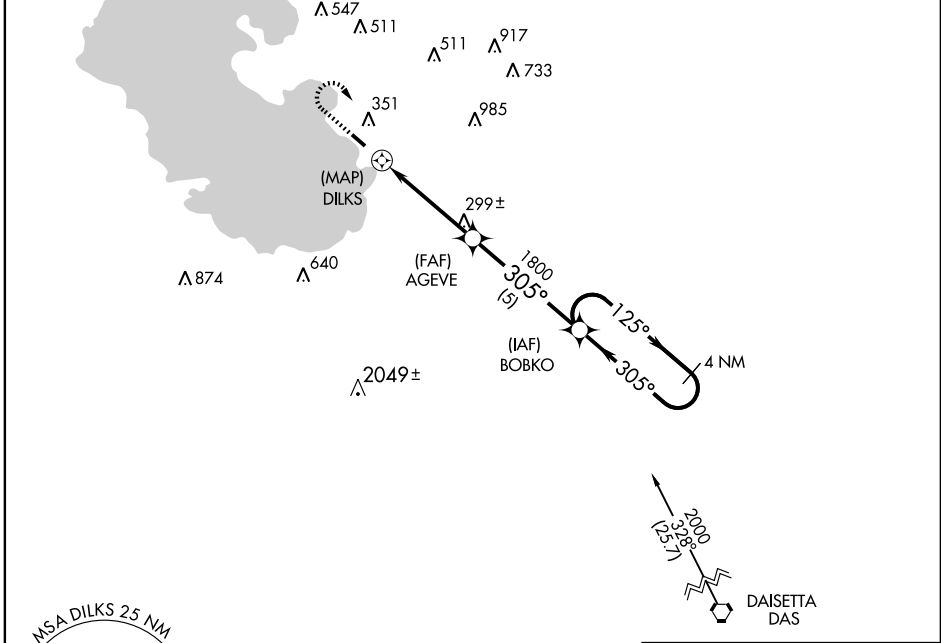
APP CRS <b>305°</b>	Rwy Idg <b>3700</b>
	TDZE <b>151</b>
	Apt Elev <b>151</b>

Use Houston/Lone Star Executive altimeter setting.  
 NA DME/DME RNP-0.3 NA

MISSED APPROACH: Climb to 1000 then climbing right turn to 2000 direct BOBK0 WP and hold.

HOUSTON CENTER  
**125.17 285.57**

UNICOM  
**122.7 (CTAF)**



CATEGORY	A	B	C	D
RNAV MDA	580-1	429 (500-1)	580-1¼ 429 (500-1¼)	NA
CIRCLING	800-1	649 (700-1)	800-1¼ 649 (700-1¼)	NA

SC-5, 22 OCT 2009 to 19 NOV 2009

SC-5, 22 OCT 2009 to 19 NOV 2009