

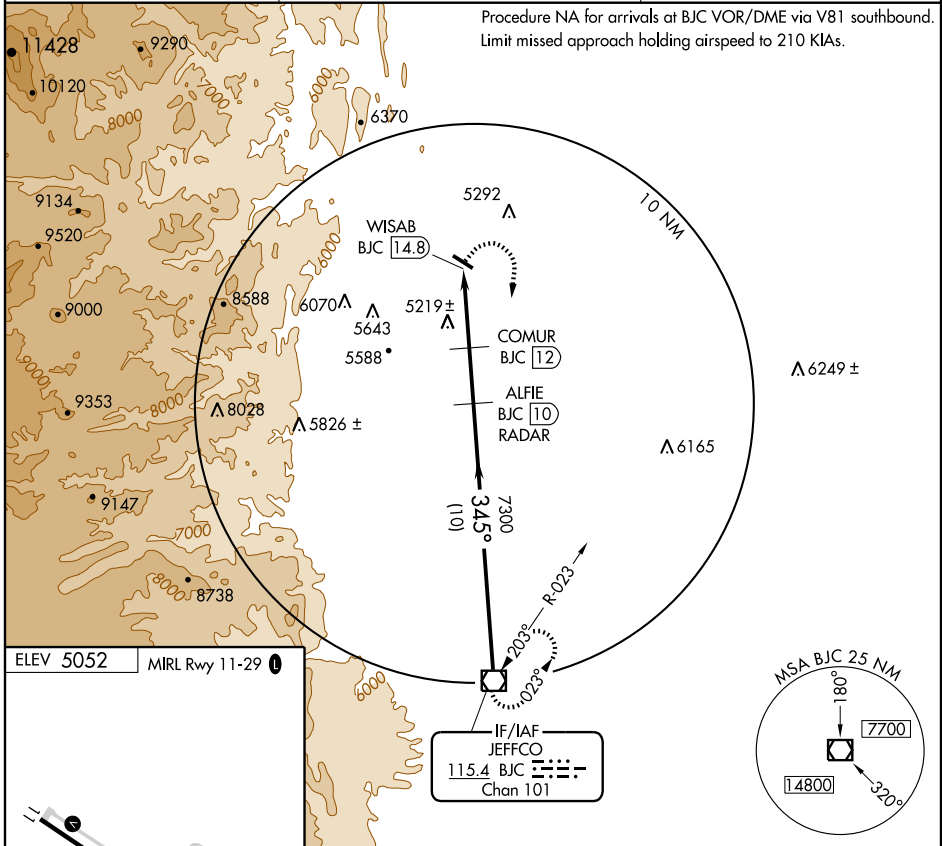
VOR/DME BJC 115.4 Chan 101	APP CRS 345°	Rwy Idg TDZE Apt Elev N/A N/A 5052
--	------------------------	--

VOR/DME-A

LONGMONT/VANCE BRAND (LMO)

NA Use Denver Intl altimeter setting.	MISSED APPROACH: Climbing right turn to 8000 direct BJC VOR/DME and hold.
---------------------------------------	---

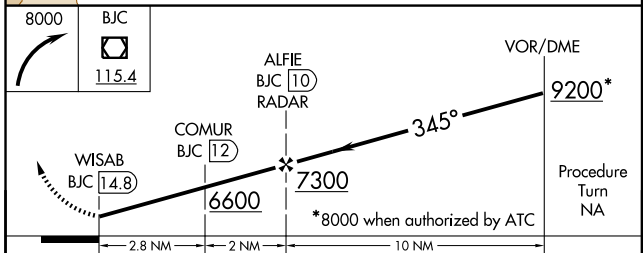
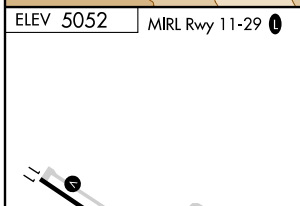
AWOS-3 120.0	DENVER APP CON 126.1 360.75	UNICOM 122.975 (CTAF)
------------------------	---------------------------------------	---------------------------------



Procedure NA for arrivals at BJC VOR/DME via V81 southbound.
Limit missed approach holding airspeed to 210 KIAS.

SW-1, 22 OCT 2009 to 19 NOV 2009

SW-1, 22 OCT 2009 to 19 NOV 2009



CATEGORY	A	B	C	D
CIRCLING	5700-1 648 (700-1)	5720-1 668 (700-1)	5740-2 688 (700-2)	5740-2½ 688 (700-2½)