

LONGMONT, COLORADO

AL-9041 (FAA)

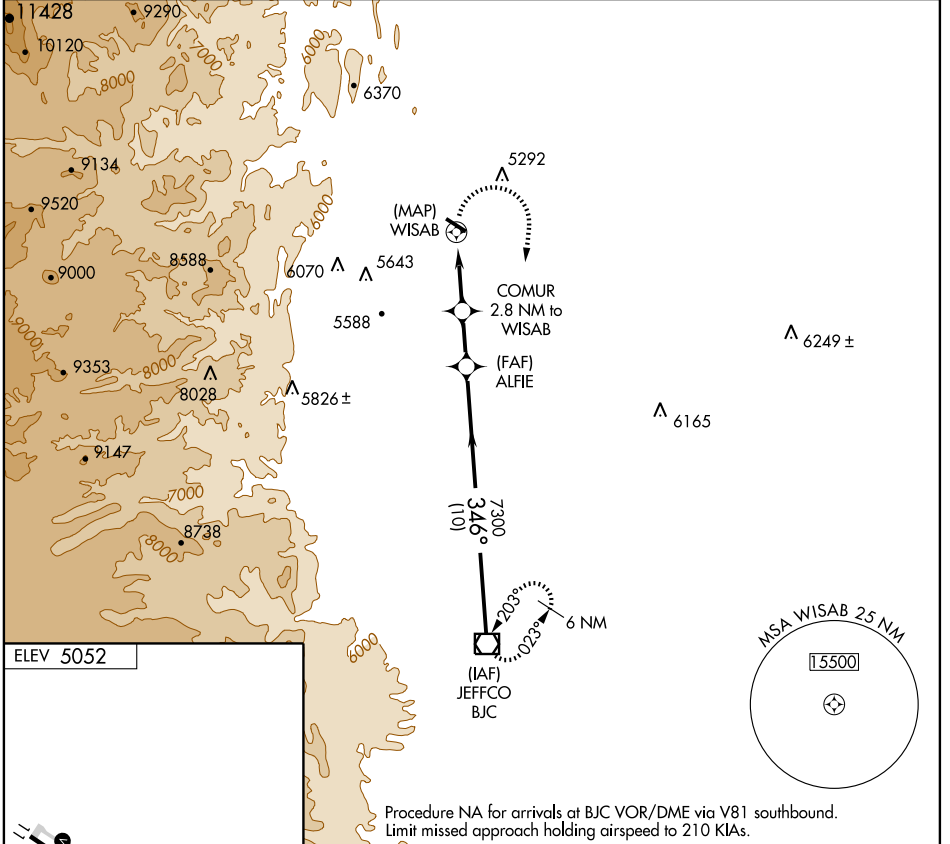
# RNAV (GPS)-B

LONGMONT/VANCE BRAND (LMO)

APP CRS <b>346°</b>	Rwy Idg TDZE Apt Elev	<b>N/A</b> <b>N/A</b> <b>5052</b>
------------------------	-----------------------------	---

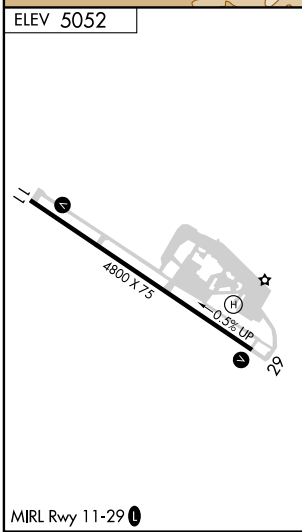
<b>▽</b> Use Denver Intl altimeter setting.	MISSED APPROACH: Climbing right turn to 8000 direct BJC VOR/DME and hold.
<b>▲ NA</b> GPS or RNP-0.3 required. DME/DME RNP-0.3 NA.	

AWOS-3 <b>120.0</b>	DENVER APP CON <b>126.1 360.75</b>	UNICOM <b>122.975 (CTAF)</b> <b>L</b>
------------------------	---------------------------------------	--



SW-1, 22 OCT 2009 to 19 NOV 2009

SW-1, 22 OCT 2009 to 19 NOV 2009



LONGMONT, COLORADO  
Orig-B 09295

Procedure NA for arrivals at BJC VOR/DME via V81 southbound.  
Limit missed approach holding airspeed to 210 KIAs.

8000	BJC	*8000 when authorized by ATC.	VOR/DME	
	COMUR 2.8 NM to WISAB	ALFIE	9200*	
	WISAB	7300	Procedure Turn NA	
	2.8 NM	2 NM	10 NM	
CATEGORY	A	B	C	D
CIRCLING	5700-1 648 (700-1)	5720-1 668 (700-1)	5740-2 688 (700-2)	5740-2 1/4 688 (700-2 1/4)

40°10'N-105°10'W

LONGMONT/VANCE BRAND (LMO)

# RNAV (GPS)-B