

LONGMONT, COLORADO

AL-9041 (FAA)

RNAV (GPS) RWY 29

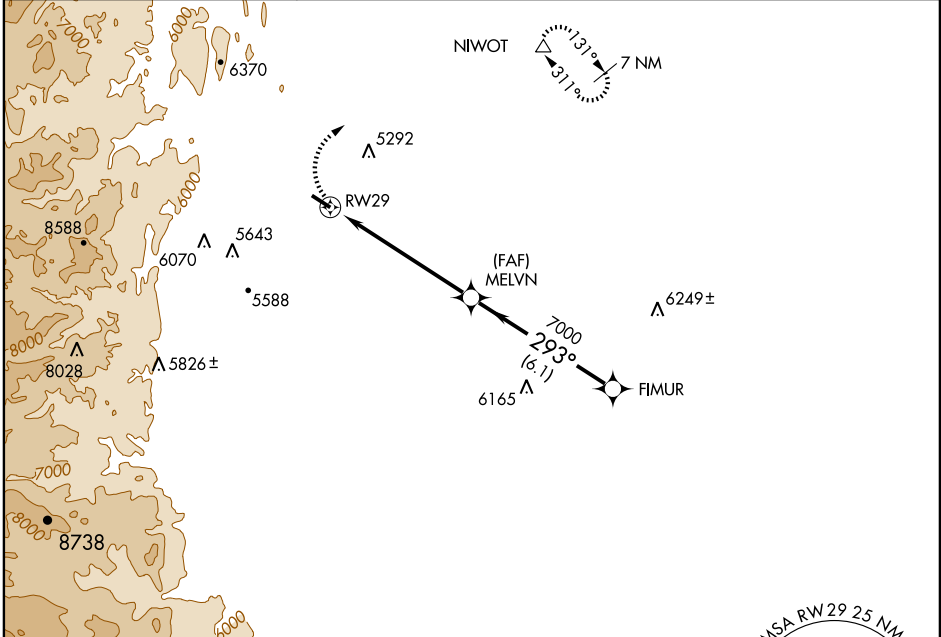
LONGMONT/VANCE BRAND (LMO)

APP CRS 293°	Rwy Idg 4800
	TDZE 5044
	Apt Elev 5052

NA Use Denver Intl altimeter setting.
GPS or RNP-0.3 required. DME/DME RNP-0.3 NA.

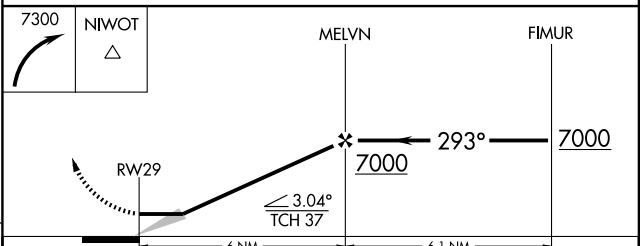
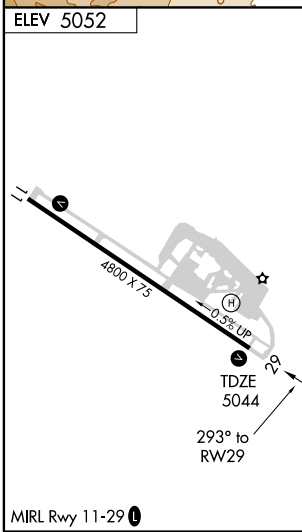
MISSED APPROACH: Climbing right turn to 7300 direct NIWOT WP and hold.

AWOS-3 120.0	DENVER APP CON 126.1 360.75	UNICOM 122.975 (CTAF)
------------------------	---------------------------------------	---------------------------------



SW-1, 22 OCT 2009 to 19 NOV 2009

SW-1, 22 OCT 2009 to 19 NOV 2009



CATEGORY	A	B	C	D
LNAV MDA	5640-1	596 (600-1)	5640-1½ 596 (600-1½)	5640-1¾ 596 (600-1¾)
CIRCLING	5700-1 648 (700-1)	5720-1 668 (700-1)	5740-2 688 (700-2)	5740-2¼ 688 (700-2¼)

LONGMONT, COLORADO
Orig-A 08157

40°10'N-105°10'W

RNAV (GPS) RWY 29

LONGMONT/VANCE BRAND (LMO)