

FORT ATKINSON, WISCONSIN

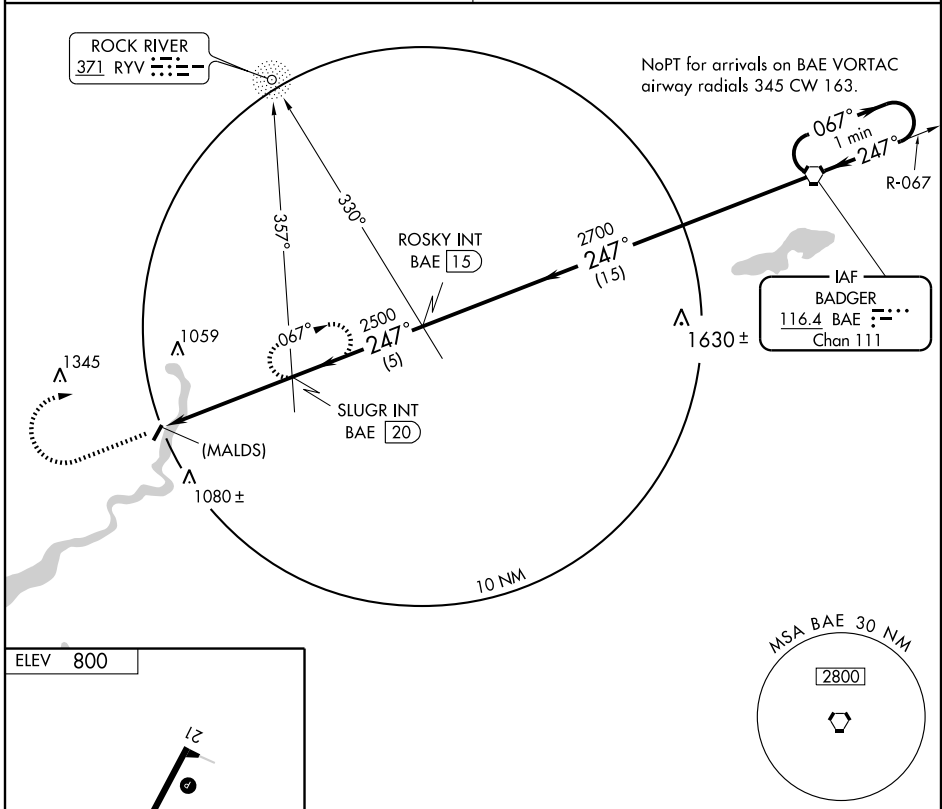
AL-9037 (FAA)

VOR-A

FORT ATKINSON MUNI (61C)

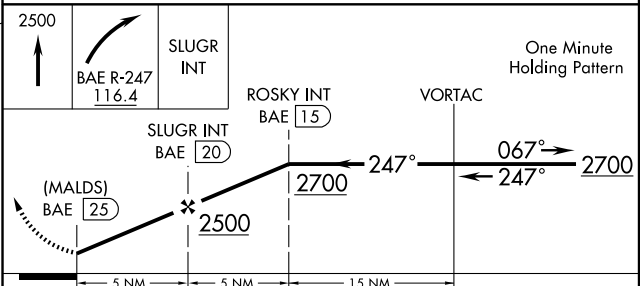
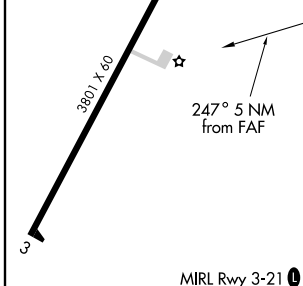
VORTAC BAE 116.4 Chan 111	APP CRS 247°	Rwy Idg TDZE Apt Elev	N/A N/A 800
--	------------------------	-----------------------------	--------------------------

<p>▲ NA</p> <p>Use Watertown altimeter setting. ADF or DME REQUIRED.</p>	<p>MISSED APPROACH: Climb to 2500 then right turn via BAE R-247 to SLUGR Int and hold.</p>
<p>MADISON APP CON ★</p> <p>120.1 350.3</p>	<p>CTAF</p> <p>122.9 0</p>



EC-3, 22 OCT 2009 to 19 NOV 2009

EC-3, 22 OCT 2009 to 19 NOV 2009



FAF to MAP 5 NM					
Knots	60	90	120	150	180
Min:Sec	5:00	3:20	2:30	2:00	1:40

CATEGORY	A	B	C	D
CIRCLING	1420-1 620 (700-1)	1420-1¼ 620 (700-1¼)	1420-1¾ 620 (700-1¾)	NA

FORT ATKINSON, WISCONSIN
Orig-B 06103

42° 58'N - 88° 49'W

FORT ATKINSON MUNI (61C)
VOR-A