

EAGLE BUTTE, SOUTH DAKOTA

AL-9031 (FAA)

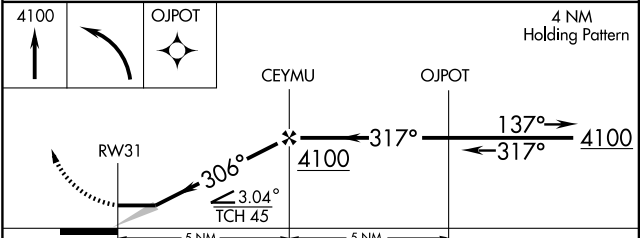
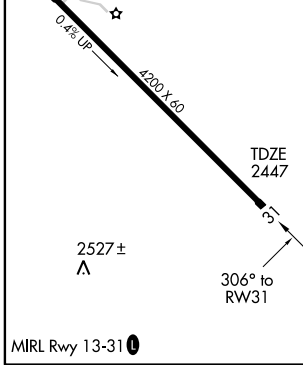
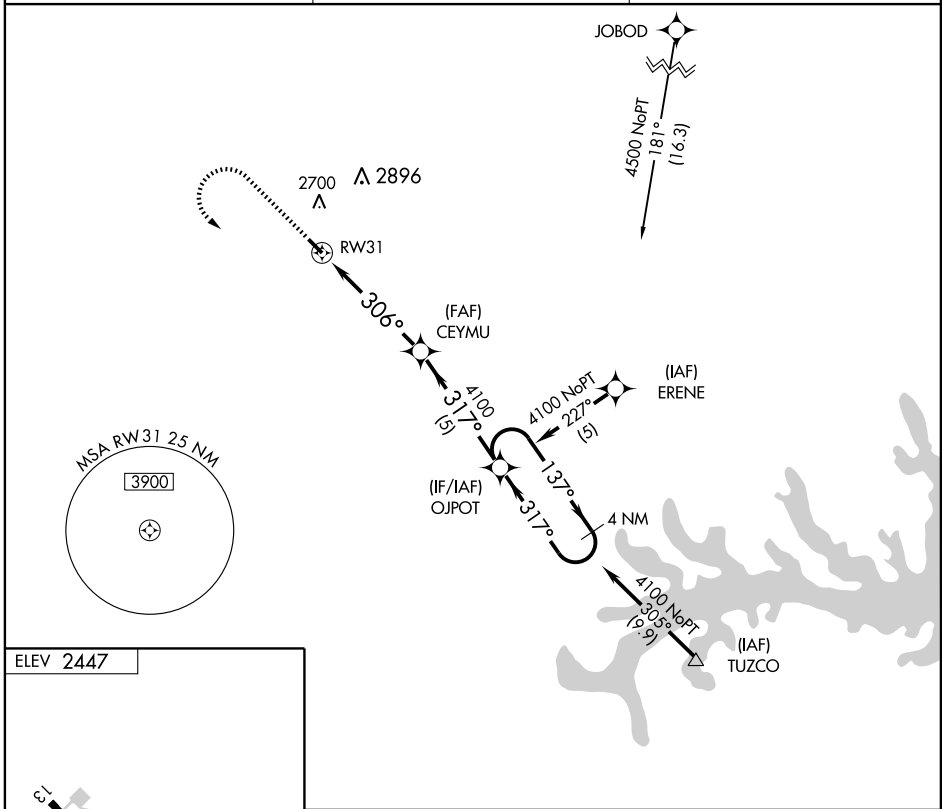
RNAV (GPS) RWY 31

EAGLE BUTTE/CHEYENNE EAGLE BUTTE (84D)

APP CRS 306°	Rwy Idg 4200 TDZE 2447 Apt Elev 2447
------------------------	---

▼ GPS or RNP-0.3 required. DME/DME RNP- 0.3 NA.	MISSED APPROACH: Climb to 4100 then turn left direct OJPOT WP and hold.
▲ NA Use Pierre altimeter setting.	

MINNEAPOLIS CENTER 120.05 290.35	CTAF 122.9	122.8 0
--	----------------------	-----------------------



CATEGORY	A	B	C	D
LNAV MDA	3020-1	573 (600-1)	NA	
CIRCLING	3240-1 793 (800-1)	3240-1½ 793 (800-1½)	NA	

EAGLE BUTTE, SOUTH DAKOTA
Orig-A 09239

EAGLE BUTTE/CHEYENNE EAGLE BUTTE (84D)

44°59'N-101°15'W

RNAV (GPS) RWY 31

NC-1, 22 OCT 2009 to 19 NOV 2009

NC-1, 22 OCT 2009 to 19 NOV 2009