

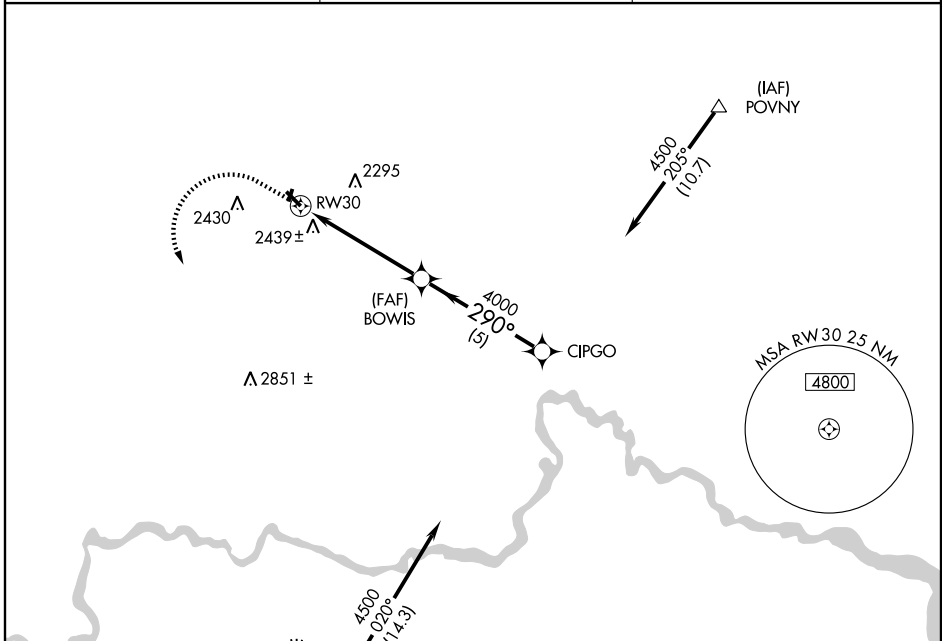
# GPS RWY 30

WATFORD CITY MUNI (S25)

APP CRS <b>290°</b>	Rwy Idg <b>4401</b>
	TDZE <b>2108</b>
	Apt Elev <b>2109</b>

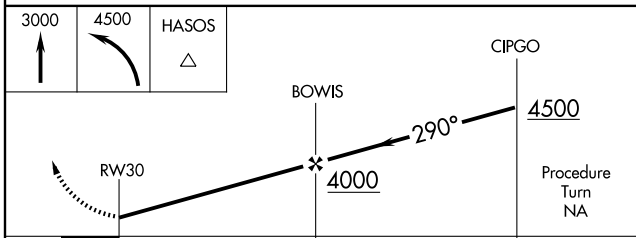
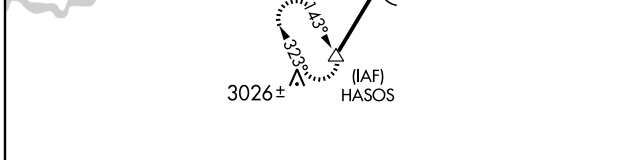
<p><b>▽</b> Use Williston altimeter setting.</p> <p><b>△</b> NA</p>	<p>MISSED APPROACH: Climb to 3000 then climbing left turn to 4500 direct HASOS WP and hold.</p>
---	---

<p>AWOS-3 <b>118.125</b></p>	<p>SALT LAKE CENTER <b>126.85 305.2</b></p>	<p>UNICOM <b>122.8 (CTAF)</b></p>
----------------------------------	---	---------------------------------------



NC-1, 22 OCT 2009 to 19 NOV 2009

NC-1, 22 OCT 2009 to 19 NOV 2009



CATEGORY	A	B	C	D
S-30	2780-1	672 (700-1)		NA
CIRCLING	2840-1	731 (800-1)		NA

