

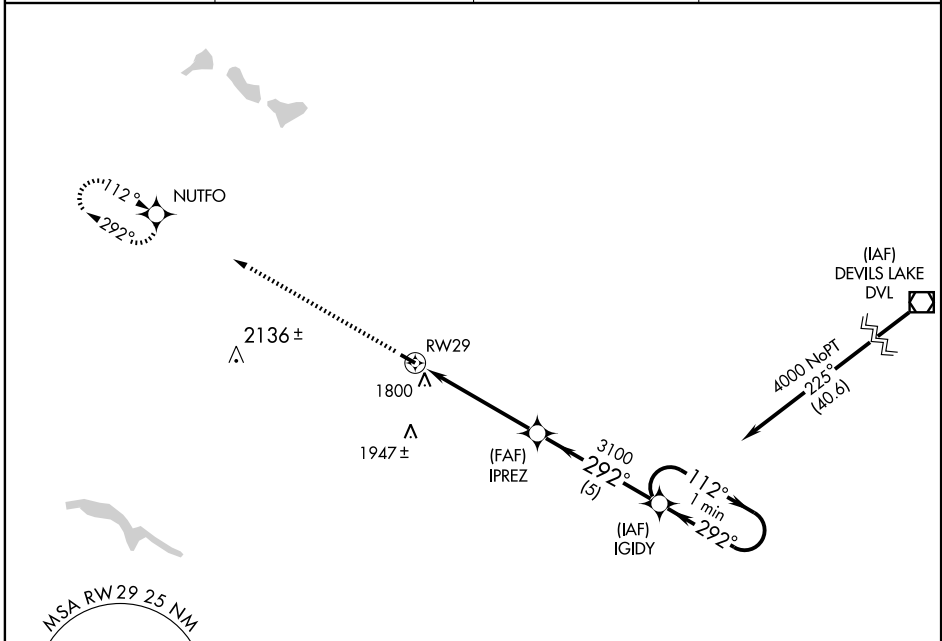
GPS RWY 29

HARVEY MUNI (5H4)

APP CRS 292°	Rwy Idg TDZE Apt Elev	3600 1605 1605
------------------------	-----------------------------	---

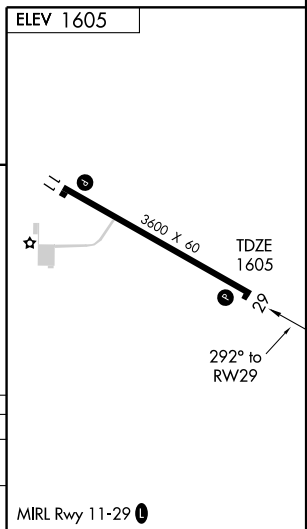
▲ NA	Use Devils Lake altimeter setting. Procedure not authorized at night.	MISSED APPROACH: Climb to 4000 direct NUTFO WP and hold.	
-------------	--	--	--

AWOS-3 118.825	DEVILS LAKE AWOS-3 125.875	MINNEAPOLIS CENTER 124.2 270.3	UNICOM 122.8 (CTAF) ①
--------------------------	--------------------------------------	--	--



NC-1, 22 OCT 2009 to 19 NOV 2009

NC-1, 22 OCT 2009 to 19 NOV 2009



4000	NUTFO	IPREZ	IGIDY	One Minute Holding Pattern
RW29		3100	3100	112°
5 NM		5 NM		292°

CATEGORY	A	B	C	D
S-29	2140-1	535 (600-1)	2140-1½ 535 (600-1½)	NA
CIRCLING	2240-1	635 (700-1)	2240-1¾ 635 (700-1¾)	NA