

HILLSBORO, NORTH DAKOTA

AL-9021 (FAA)

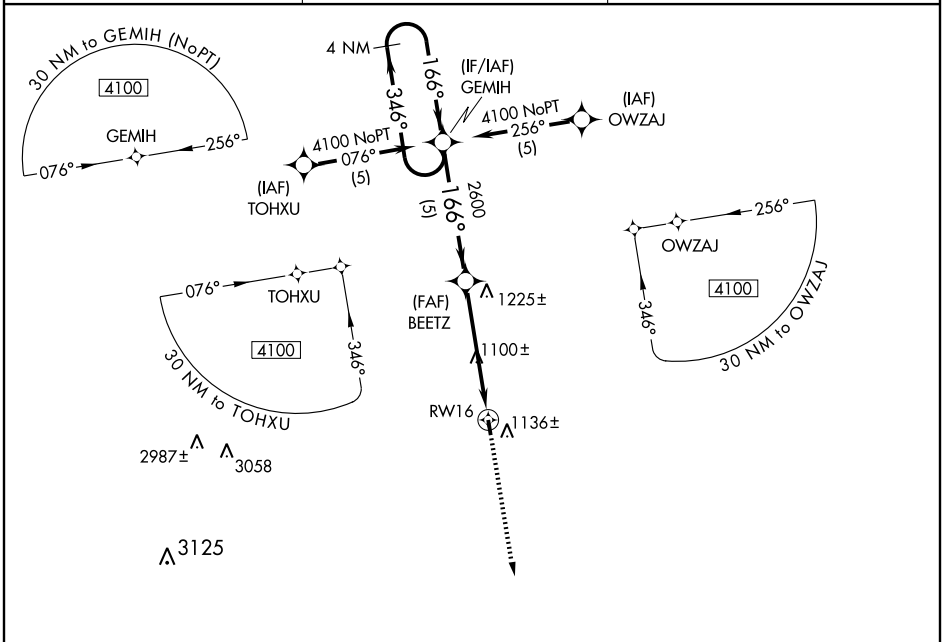
RNAV (GPS) RWY 16

HILLSBORO MUNI (3H4)

APP CRS	Rwy Idg	3300
166°	TDZE	905
	Apt Elev	905

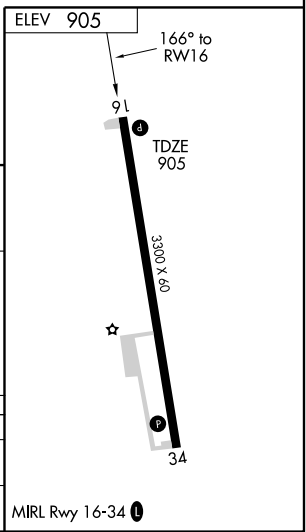
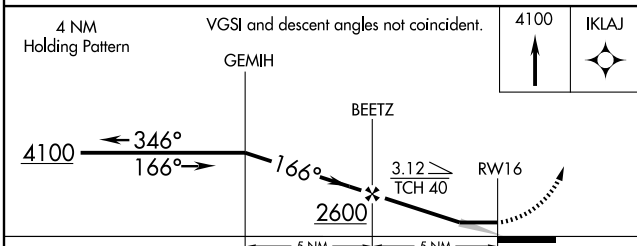
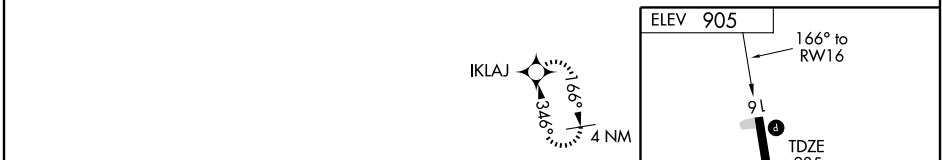
	DME/DME RNP- 0.3 NA. Use Fargo altimeter setting.	MISSED APPROACH: Climb to 4100 direct IKLAJ WP and hold.
	FARGO ASOS 124.5	FARGO APP CON ★ 120.4 377.15

FARGO ASOS 124.5	FARGO APP CON ★ 120.4 377.15	CTAF 122.9
----------------------------	--	----------------------



NC-1, 22 OCT 2009 to 19 NOV 2009

NC-1, 22 OCT 2009 to 19 NOV 2009



CATEGORY	A	B	C	D
LNVA MDA	1480-1	575 (600-1)	1480-1½ 575 (600-1½)	NA
CIRCLING	1520-1	615 (700-1)	1520-1¾ 615 (700-1¾)	NA

HILLSBORO, NORTH DAKOTA
Orig-A 09295

47° 22'N-97° 04'W

RNAV (GPS) RWY 16

HILLSBORO MUNI (3H4)