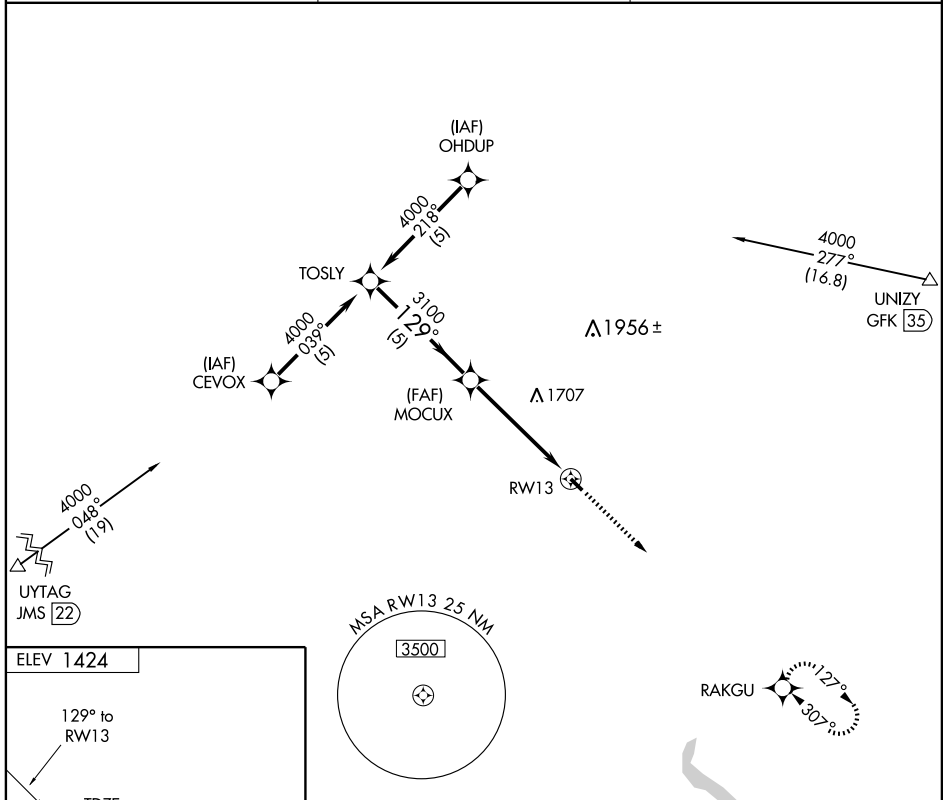


GPS RWY 13
COOPERSTOWN MUNI (S32)

APP CRS 129°	Rwy Idg 3500
	TDZE 1424
	Apt Elev 1424

▲ NA	Use Jamestown alimeter setting.	MISSED APPROACH: Climb to 3100 direct RAKGU WP and hold.
-------------	---------------------------------	--

AWOS-3 118.750	GRAND FORKS RADIO 123.6	CTAF 122.9 0
--------------------------	-----------------------------------	------------------------



NC-1, 22 OCT 2009 to 19 NOV 2009

NC-1, 22 OCT 2009 to 19 NOV 2009

