

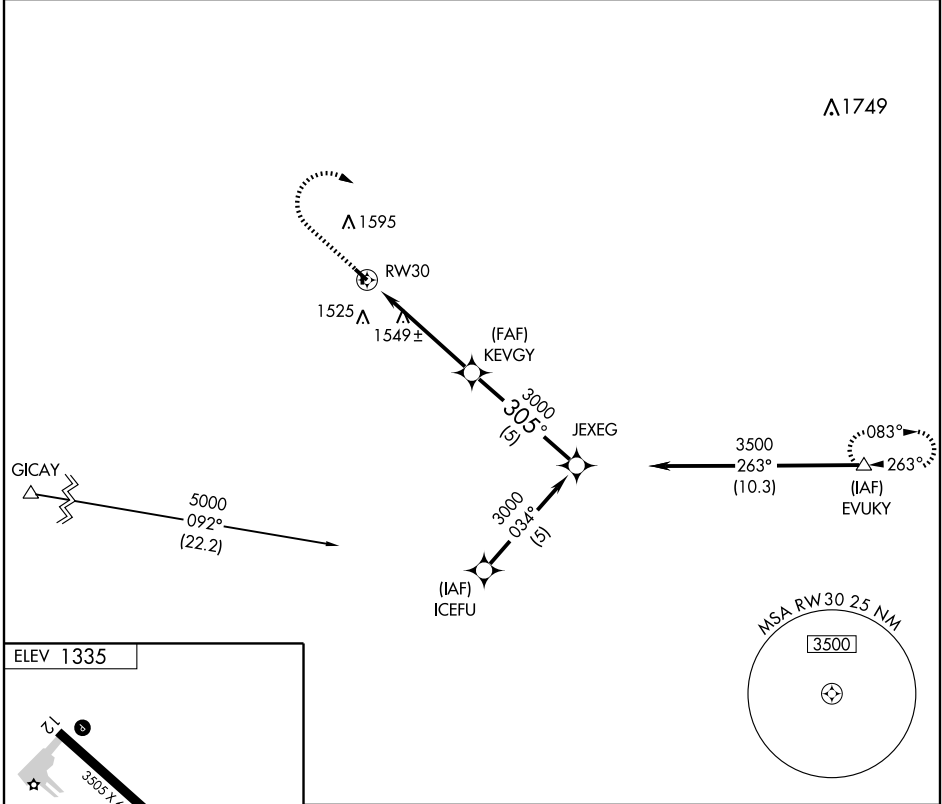
# GPS RWY 30

OAKES MUNI (2D5)

APP CRS	Rwy Idg	<b>3505</b>
<b>305°</b>	TDZE	<b>1335</b>
	Apt Elev	<b>1335</b>

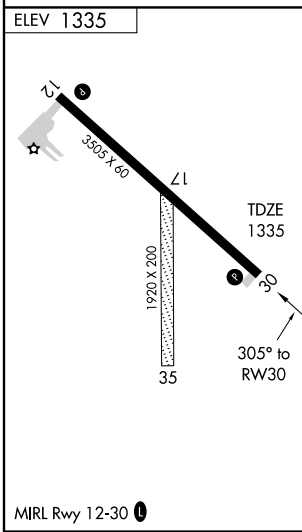
▼ Use Aberdeen altimeter setting.  
 ▲ NA  
 MISSED APPROACH: Climb to 2000 then climbing right turn to 5000 direct EVUKY WP and hold.

AWOS-3 <b>118.675</b>	MINNEAPOLIS CENTER <b>124.2 270.3</b>	CTAF <b>122.9</b>
--------------------------	--	----------------------



NC-1, 22 OCT 2009 to 19 NOV 2009

NC-1, 22 OCT 2009 to 19 NOV 2009



2000	5000	EVUKY	KEVGY	JEXEG	Procedure Turn NA
↑	↷	△	✱	←	
RW30		305°		3000	
≤ 3.06° TCH 40		VGSIs and descent angles not coincident.			
5 NM		5 NM			
CATEGORY	A	B	C	D	
S-30	1920-1	585 (600-1)	1920-1½ 585 (600-1½)	NA	
CIRCLING	1920-1	585 (600-1)	2020-2 685 (700-2)	NA	