

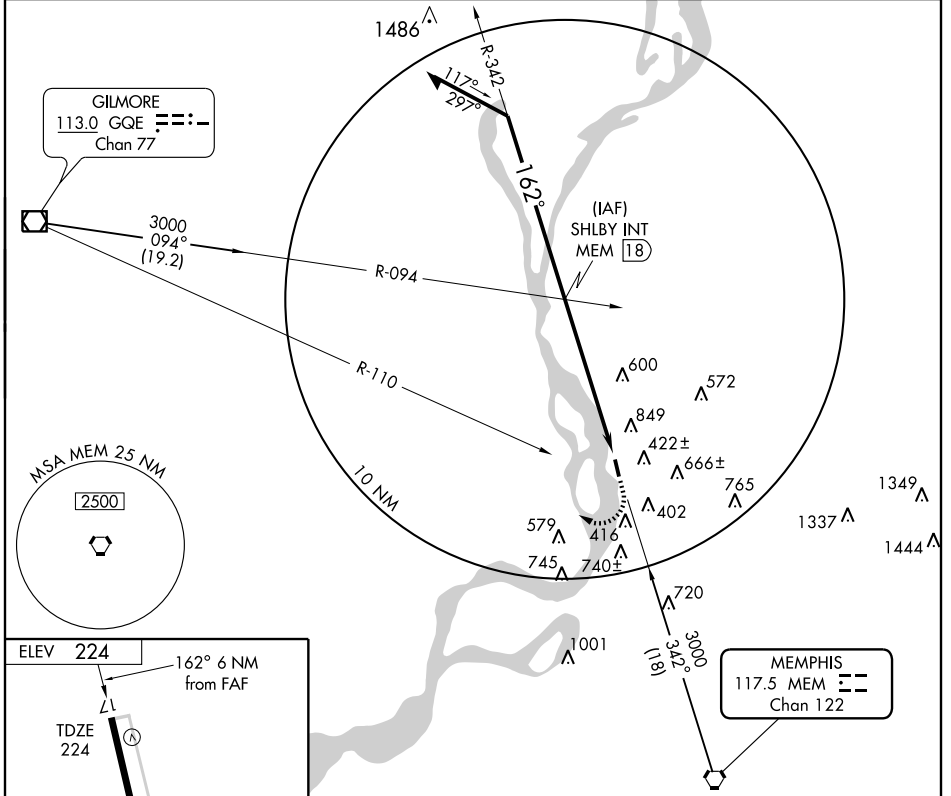
VORTAC MEM 117.5 Chan 122	APP CRS 162°	Rwy Idg 3800 TDZE 224 Apt Elev 224
---	------------------------	---

VOR RWY 17

MEMPHIS/GENERAL DEWITT SPAIN (M01)

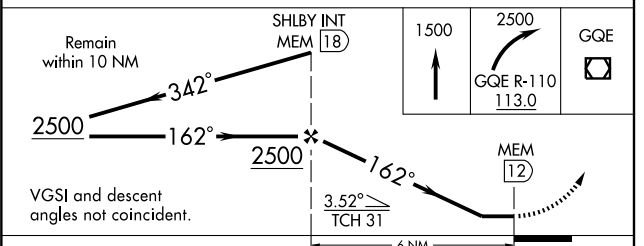
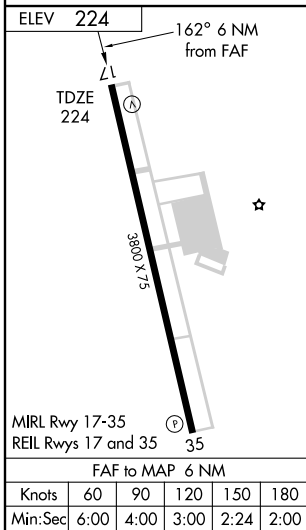
NA Use Memphis International altimeter setting. MISSED APPROACH: Climb to 1500 then climbing right turn to 2500 via GQE R-110 to GQE VOR/DME.

MEMPHIS APP CON **119.1 291.6** UNICOM **122.7** (CTAF)



SE-1, 22 OCT 2009 to 19 NOV 2009

SE-1, 22 OCT 2009 to 19 NOV 2009



CATEGORY	A	B	C	D
S-17	1200-1¼ 976 (1000-1¼)	1200-1½ 976 (1000-1½)	1200-3 976 (1000-3)	NA
CIRCLING	1240-1¼ 1016 (1100-1¼)	1240-1½ 1016 (1100-1½)	1240-3 1016 (1100-3)	NA

VOR RWY 17