

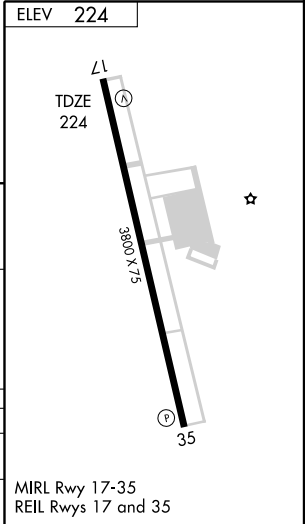
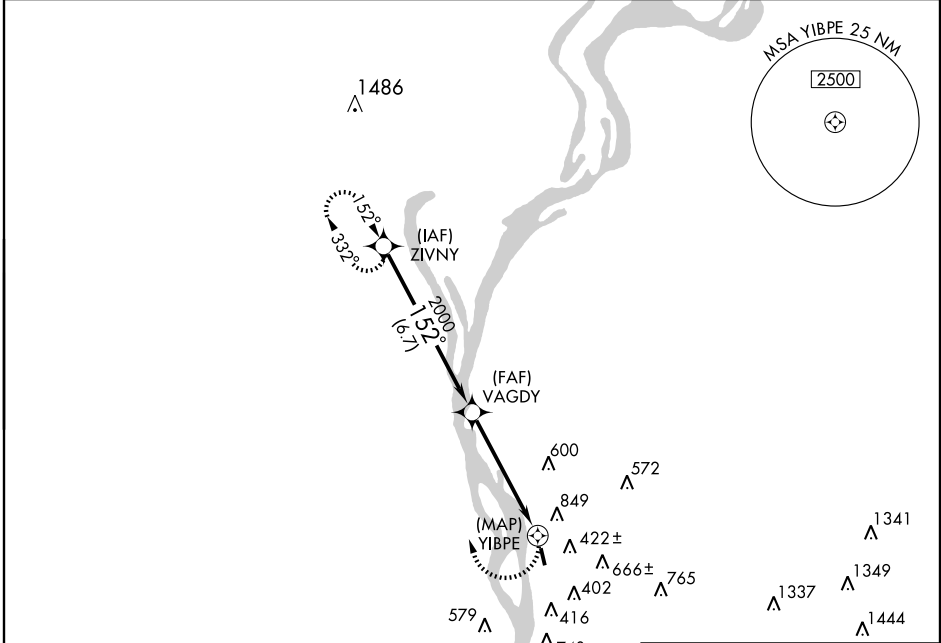
GPS RWY 17

MEMPHIS/ GENERAL DEWITT SPAIN (M01)

APP CRS	Rwy Idg	3800
152°	TDZE	224
	Apt Elev	224

Use Memphis International altimeter setting.	MISSED APPROACH: Climbing right turn to 2500 direct ZIVNY WP and hold.
--	--

MEMPHIS APP CON 119.1 291.6	UNICOM 122.7 (CTAF)
---------------------------------------	-------------------------------



Procedure Turn NA	ZIVNY			2500	ZIVNY
	VAGDY			2000	YIBPE
VGSI and descent angles not coincident.					
6.7 NM		5 NM		0.5 NM	

CATEGORY	A	B	C	D
S-17	1040-1 816 (900-1)	1040-1½ 816 (900-1½)	1040-2½ 816 (900-2½)	NA
CIRCLING	1240-1¼ 1016 (1100-1¼)	1240-1½ 1016 (1100-1½)	1240-3 1016 (1100-3)	NA

SE-1, 22 OCT 2009 to 19 NOV 2009

SE-1, 22 OCT 2009 to 19 NOV 2009