

COOK, MINNESOTA

AL-9017 (FAA)

RNAV (GPS) RWY 31

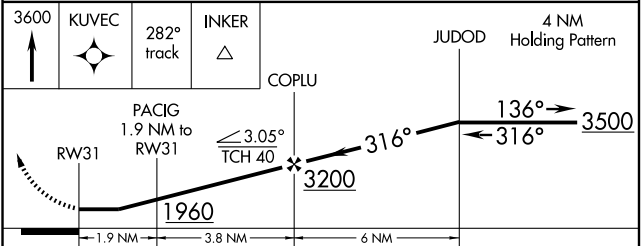
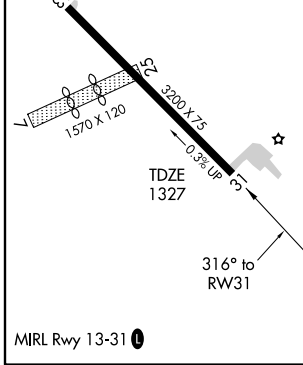
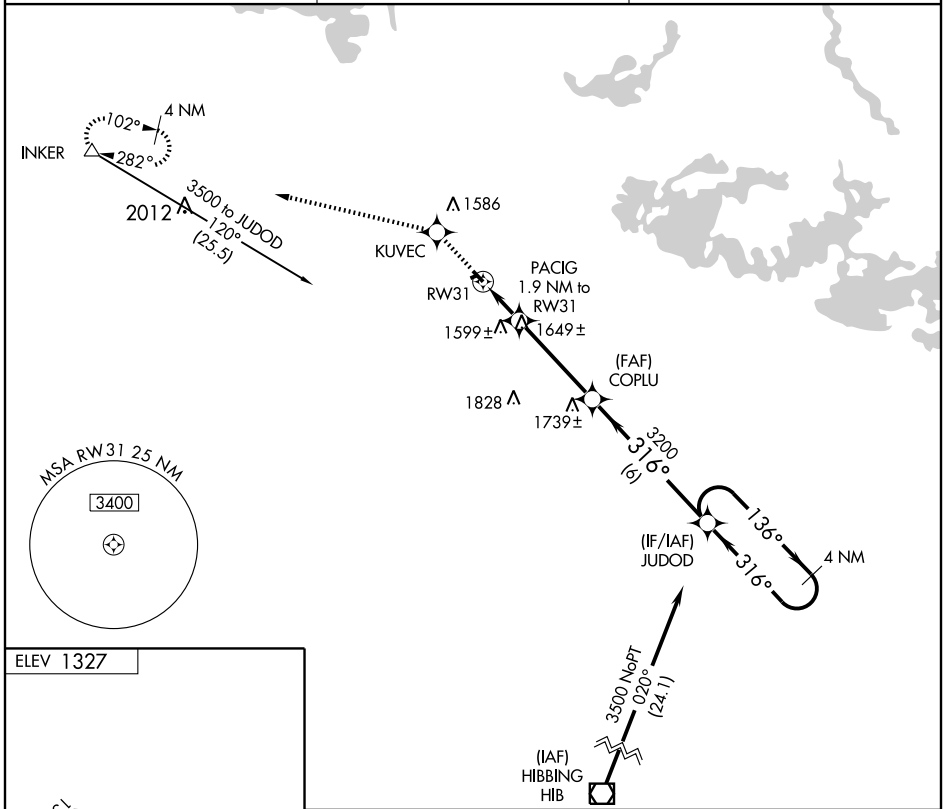
COOK MUNI (CQM)

APP CRS	Rwy Idg	3200
316°	TDZE	1327
	Apt Elev	1327

⚠ DME/DME RNP - 0.3 NA.
 Procedure NA at night.

MISSED APPROACH: Climb to 3600 direct KUVEC and via 282° track to INKER and hold.

AWOS-3 118.175	PRINCETON RADIO 122.45	CTAF 122.9
--------------------------	----------------------------------	----------------------



CATEGORY	A	B	C	D
LNAV MDA	1820-1	493 (500-1)	NA	
CIRCLING	1900-1	573 (600-1)	NA	

COOK, MINNESOTA
 Orig 09127

47°49'N-92°41'W

COOK MUNI (CQM) RNAV (GPS) RWY 31

NC-1, 22 OCT 2009 to 19 NOV 2009

NC-1, 22 OCT 2009 to 19 NOV 2009