

MILLINGTON, TENNESSEE

AL-9016 (FAA)

VORTAC MEM	APP CRS	Rwy Idg	<b>3500</b>
<b>117.5</b>	<b>188°</b>	TDZE	<b>247</b>
Chan <b>122</b>		Apt Elev	<b>247</b>

# VOR/DME RWY 18

MILLINGTON/ CHARLES W. BAKER (2M8)

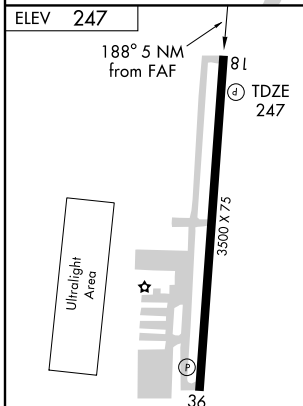
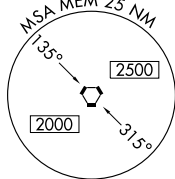
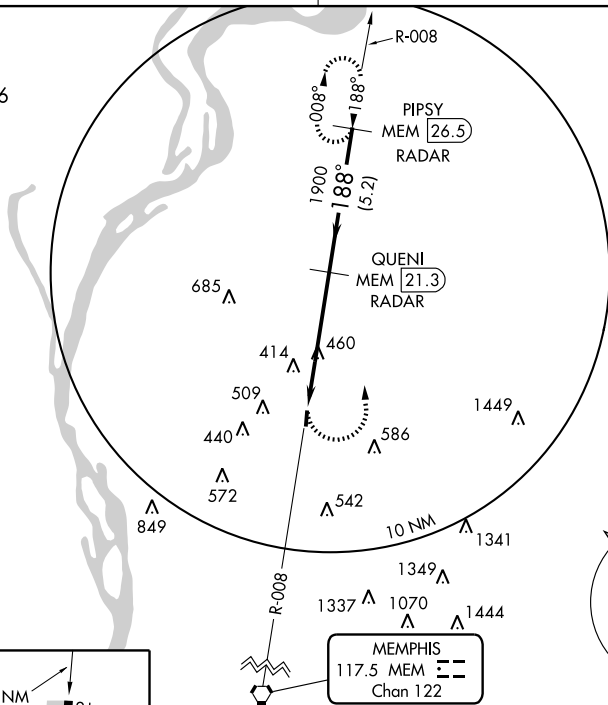
**▲** Use Millington Rgnl Jetport altimeter setting, when not received use Memphis Intl altimeter setting.  
**▲ NA** **RADAR REQUIRED.**

**MISSED APPROACH:** Climbing left turn to 2000 via MEM VORTAC R-008 to PIPSY/MEM 26.5 DME and hold.

MEMPHIS APP CON  
**125.8 338.3**

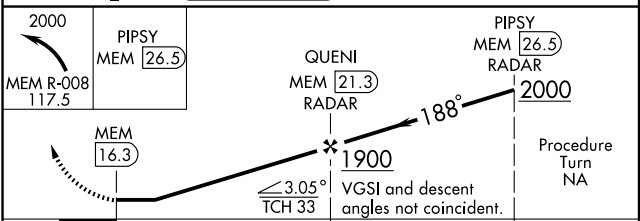
UNICOM  
**122.8 (CTAF)**

▲ 1486



MIRL Rwy 18-36  
 REIL Rws 18 and 36

Knots	60	90	120	150	180
Min:Sec					



CATEGORY	A	B	C	D
S-18	800-1	553 (600-1)	800-1½ 553 (600-1½)	NA
CIRCLING	800-1	553 (600-1)	900-1¾ 653 (700-1¾)	NA
MEMPHIS INTL ALTIMETER SETTING MINIMUMS				
S-18	820-1	573 (600-1)	820-1½ 573 (600-1½)	NA
CIRCLING	820-1	573 (600-1)	920-2 673 (700-2)	NA

MILLINGTON, TENNESSEE  
 Amdt 1 08269

35°17'N-89°56'W

# VOR/DME RWY 18

SE-1, 22 OCT 2009 to 19 NOV 2009

SE-1, 22 OCT 2009 to 19 NOV 2009