

# GPS RWY 36

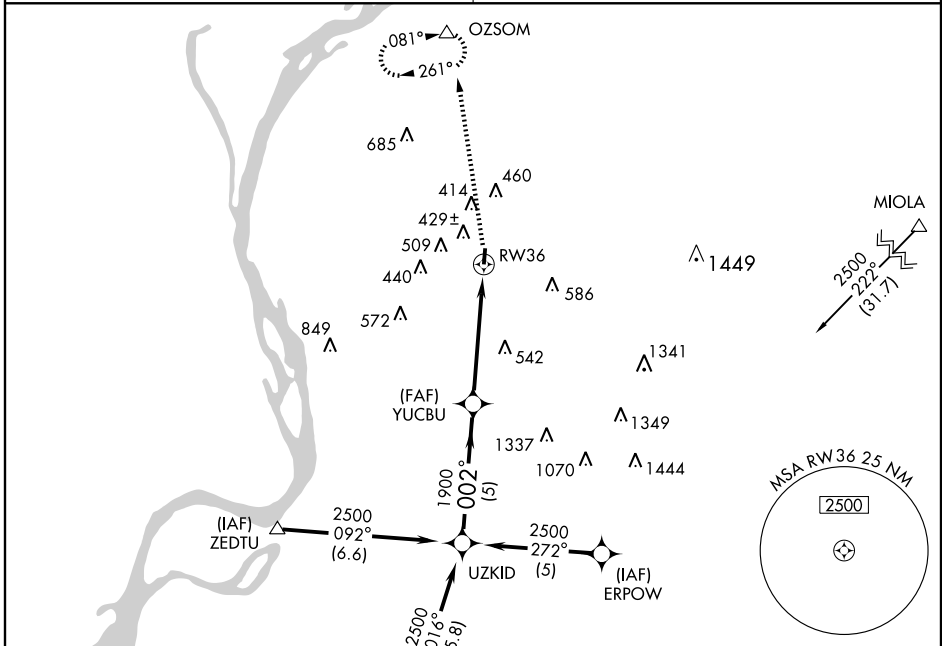
MILLINGTON/ CHARLES W. BAKER (2M8)

APP CRS	Rwy Idg	<b>3500</b>
<b>002°</b>	TDZE	<b>246</b>
	Apt Elev	<b>247</b>

**▼** Use Millington Rgnl Jetport altimeter setting, when not received use Memphis Intl altimeter setting.  
**▲ NA** MISSED APPROACH: Climb to 3000 direct OZSOM WP and hold.

**MEMPHIS APP CON**  
**125.8 338.3**

**UNICOM**  
**122.8 (CTAF)**



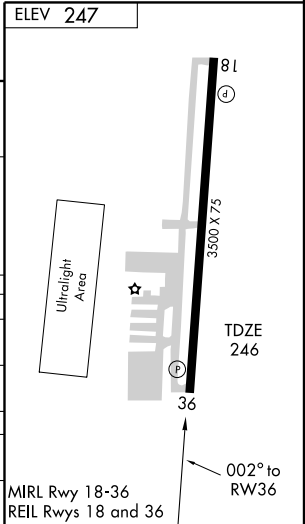
SE-1, 22 OCT 2009 to 19 NOV 2009

SE-1, 22 OCT 2009 to 19 NOV 2009



Procedure Turn	NA
UZKID	YUCBU
3000	OZSOM
2500	002°
1900	3.04° TCH 40
5 NM	5 NM

CATEGORY	A	B	C	D
S-36	780-1	534 (600-1)	780-1½ 534 (600-1½)	NA
CIRCLING	800-1	553 (600-1)	900-1¾ 653 (700-1¾)	NA
<b>MEMPHIS INTL ALTIMETER SETTING MINIMUMS</b>				
S-36	800-1	554 (600-1)	800-1½ 554 (600-1½)	NA
CIRCLING	820-1	573 (600-1)	920-2 673 (700-2)	NA



# GPS RWY 36