

GPS RWY 18

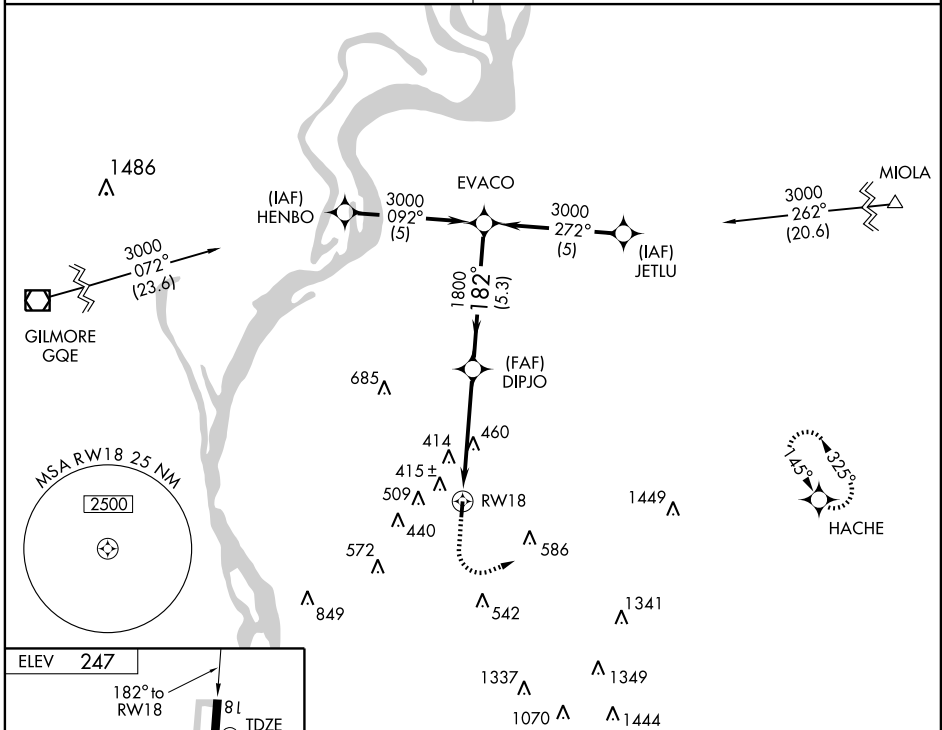
MILLINGTON/ CHARLES W. BAKER (2M8)

APP CRS	Rwy Idg	3500
182°	TDZE	247
	Apt Elev	247

▼ Use Millington Rgnl Jetport altimeter setting, when not received use Memphis Intl altimeter setting.
▲ NA MISSED APPROACH: Climb to 1200 then climbing left turn to 3000 direct HACHE WP and hold.

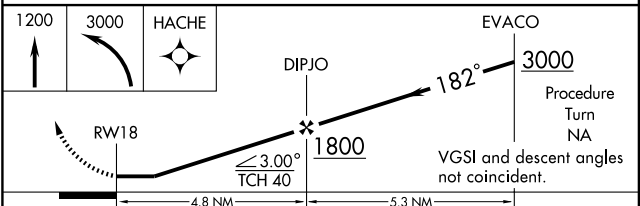
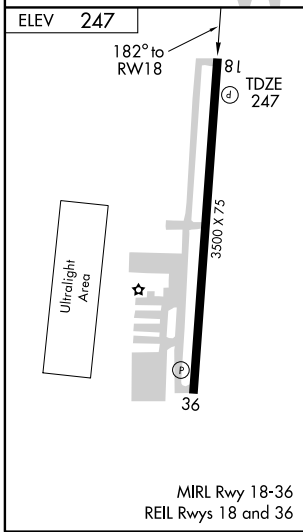
MEMPHIS APP CON
125.8 338.3

UNICOM
122.8 (CTAF)



SE-1, 22 OCT 2009 to 19 NOV 2009

SE-1, 22 OCT 2009 to 19 NOV 2009



CATEGORY	A	B	C	D
S-18	800-1	553 (600-1)	800-1½ 553 (600-1½)	NA
CIRCLING	800-1 553 (600-1)	820-1 573 (600-1)	900-1¾ 653 (700-1¾)	NA
MEMPHIS INTL ALTIMETER SETTING MINIMUMS				
S-18	820-1	573 (600-1)	820-1½ 573 (600-1½)	NA
CIRCLING	820-1 573 (600-1)	840-1 593 (600-1)	920-2 673 (700-2)	NA