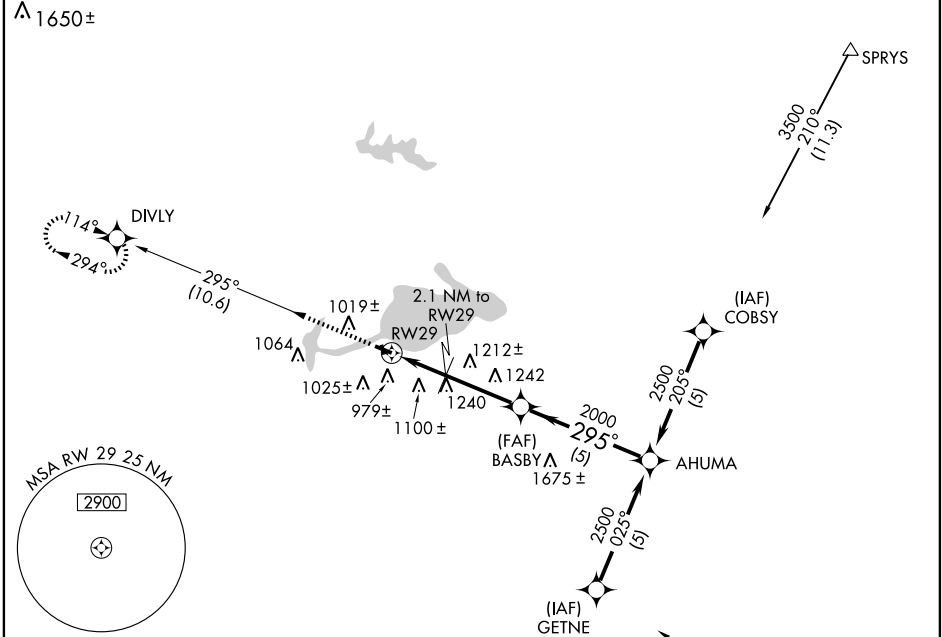


GPS RWY 29
SHAWANO MUNI (E/ZS)

APP CRS	Rwy Idg	3900
295°	TDZE	811
	Apt Elev	811

▼ Use Green Bay (Austin Straubel Intl) altimeter setting. **MISSED APPROACH:** Climb to 2500 via 295° course to DIVLY WP and hold.

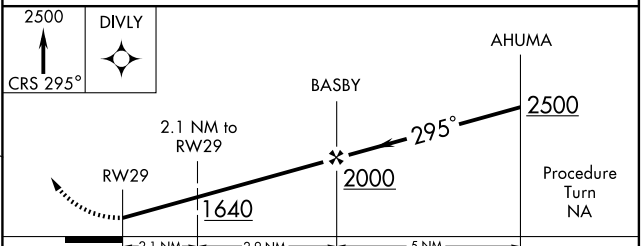
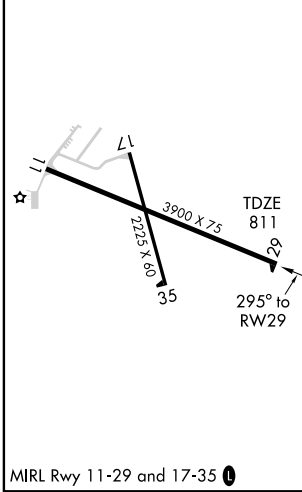
AWOS-3 118.65	GREEN BAY APP CON ★ 119.4 338.2	GCO 121.725	UNICOM 122.8 (CTAF) 📻
-------------------------	---	-----------------------	--



EC-3, 22 OCT 2009 to 19 NOV 2009

EC-3, 22 OCT 2009 to 19 NOV 2009

ELEV **811**



CATEGORY	A	B	C	D
S-29	1460-1 649 (700-1)		1460-1¾ 649 (700-1¾)	1460-2 649 (700-2)
CIRCLING	1460-1 649 (700-1)		1480-1¾ 669 (700-1¾)	1580-2½ 769 (800-2½)