

VORTAC EAU <b>112.9</b> Chan 76	APP CRS <b>265°</b>	Rwy Idg TDZE Apt Elev	<b>5074</b> <b>894</b> <b>895</b>
---------------------------------------	------------------------	-----------------------------	---

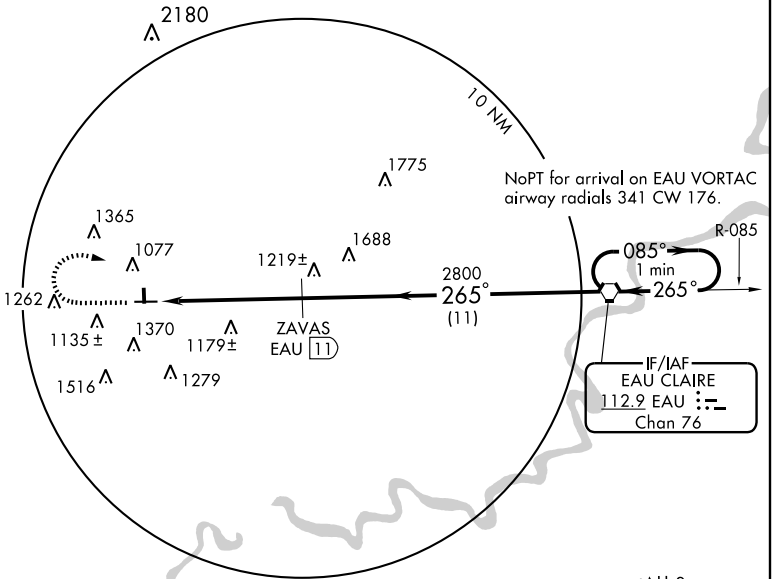
# VOR/DME RWY 27

MENOMONIE MUNI-SCORE FIELD (LUM)

**⚠** If local altimeter setting not received, use Chippewa Valley Rgnl altimeter setting and increase all MDAs 60 feet. Visibility reduction by helicopters NA. VDP NA when using Chippewa Valley Rgnl altimeter setting.

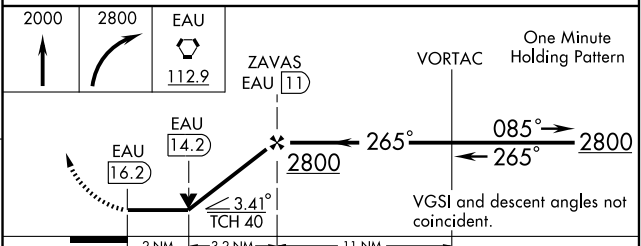
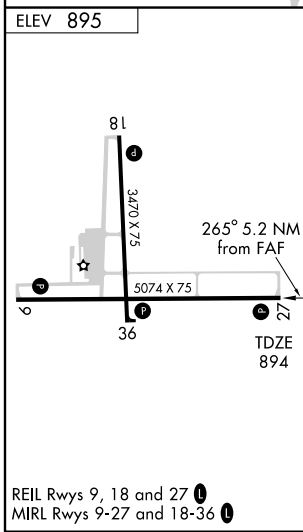
**⚠** MISSED APPROACH: Climb to 2000 then climbing right turn to 2800 direct EAU VORTAC and hold.

AWOS-3 <b>118.025</b>	MINNEAPOLIS CENTER <b>125.3 335.6</b>	GCO <b>121.725</b>	UNICOM <b>122.7 (CTAF) 0</b>
--------------------------	--	-----------------------	---------------------------------



EC-3, 22 OCT 2009 to 19 NOV 2009

EC-3, 22 OCT 2009 to 19 NOV 2009



CATEGORY	A	B	C	D
S-27	1560-1	666 (700-1)	1560-1¾ 666 (700-1¾)	NA
CIRCLING	1560-1	665 (700-1)	1560-1¾ 665 (700-1¾)	NA