

RNAV (GPS) RWY 9

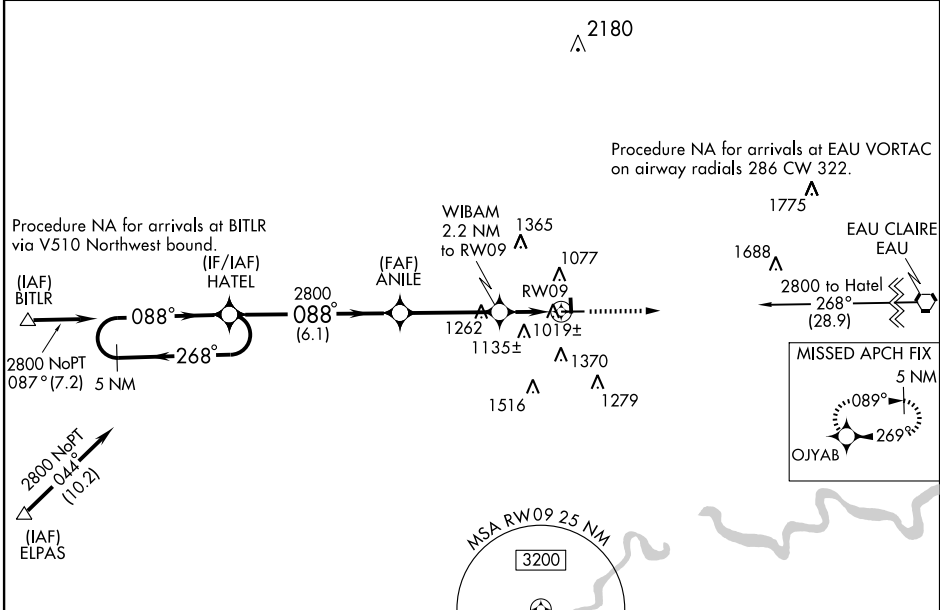
MENOMONIE MUNI-Score FIELD (LUM)

WAAS CH 40304 W09A	APP CRS 088°	Rwy Idg 5074
		TDZE 894
		Apt Elev 895

▼ For uncompensated Baro-VNAV systems, LNAV/VNAV NA below -16°C (4°F) or above 54°C (130°F). DME/DME RNP-0.3 NA. Visibility reduction by helicopters NA. LNAV/VNAV minimums NA when using Chippewa Valley Rgnl altimeter setting. If local altimeter setting not received, use Chippewa Valley Rgnl altimeter setting and increase LPV DA 41 feet and all MDAs 60 feet.

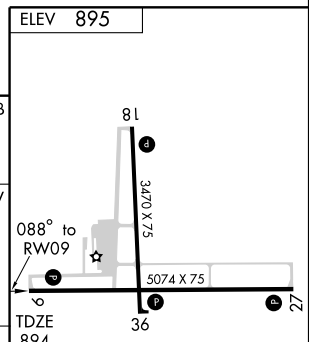
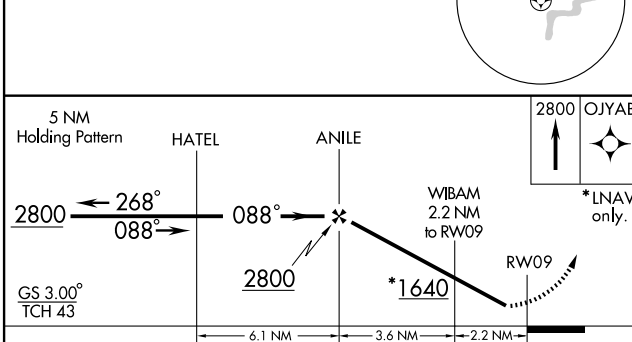
MISSED APPROACH: Climb to 2800 direct OJYAB and hold.

AWOS-3 118.025	MINNEAPOLIS CENTER 125.3 335.6	GCO 121.725	UNICOM 122.7 (CTAF) 0
--------------------------	--	-----------------------	---------------------------------



EC-3, 22 OCT 2009 to 19 NOV 2009

EC-3, 22 OCT 2009 to 19 NOV 2009



CATEGORY	A	B	C	D
LPV DA		1193-1	299 (300-1)	NA
LNAV/VNAV DA		1279-1¼	385 (400-1¼)	NA
LNAV MDA	1360-1	466 (500-1)	1360-1¼ 466 (500-1¼)	NA
CIRCLING	1440-1	545 (600-1)	1520-1¾ 625 (700-1¾)	NA

REIL Rwy 9, 18 and 27
MIRL Rwy 9-27 and 18-36

RNAV (GPS) RWY 9