

WAAS CH 97604 W27A	APP CRS 268°	Rwy Idg TDZE Apt Elev	5074 894 895
--	------------------------	-----------------------------	---

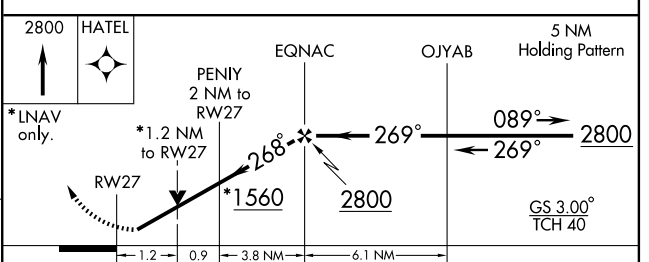
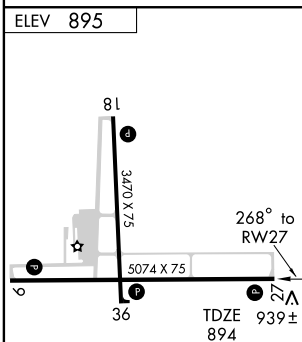
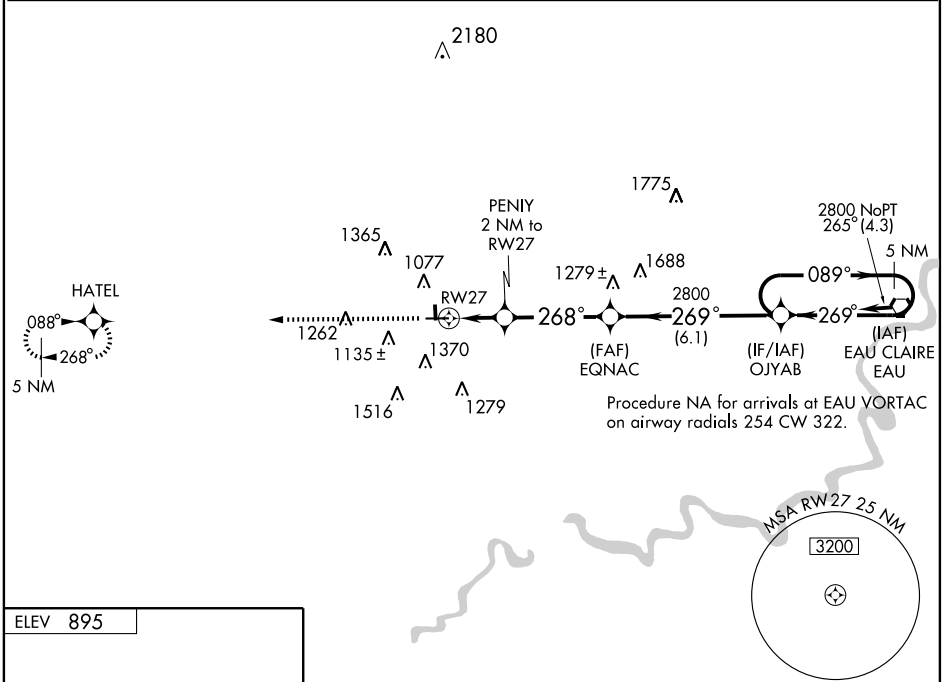
RNAV (GPS) RWY 27

MENOMONIE MUNI-Score FIELD (LUM)

Baro-VNAV NA when using Chippewa Valley Rgnl altimeter setting. For uncompensated Baro-VNAV systems, LNAV/VNAV NA below -16°C (4°F) or above 54°C (130°F). DME/DME RNP-0.3 NA. Visibility reduction by helicopters NA. VDP NA when using Chippewa Valley Rgnl altimeter setting. If local altimeter setting not received, use Chippewa Valley Rgnl altimeter setting and increase all DAs 41 feet and all MDAs 60 feet.

MISSED APPROACH: Climb to 2800 direct HATEL and hold.

AWOS-3 118.025	MINNEAPOLIS CENTER 125.3 335.6	GCO 121.725	UNICOM 122.7 (CTAF)
--------------------------	--	-----------------------	-------------------------------



CATEGORY	A	B	C	D
LPV DA		1144-1	250 (300-1)	NA
LNAV/VNAV DA		1430-2	536 (600-2)	NA
LNAV MDA	1300-1	406 (500-1)	1300-1¼ 406 (500-1¼)	NA
CIRCLING	1440-1	545 (600-1)	1520-1¾ 625 (700-1¾)	NA

REIL Rwy 9, 18 and 27
MIRL Rwy 9-27 and 18-36

EC-3, 22 OCT 2009 to 19 NOV 2009

EC-3, 22 OCT 2009 to 19 NOV 2009