

GPS RWY 32

EPHRAIM-FISH CREEK (3D2)

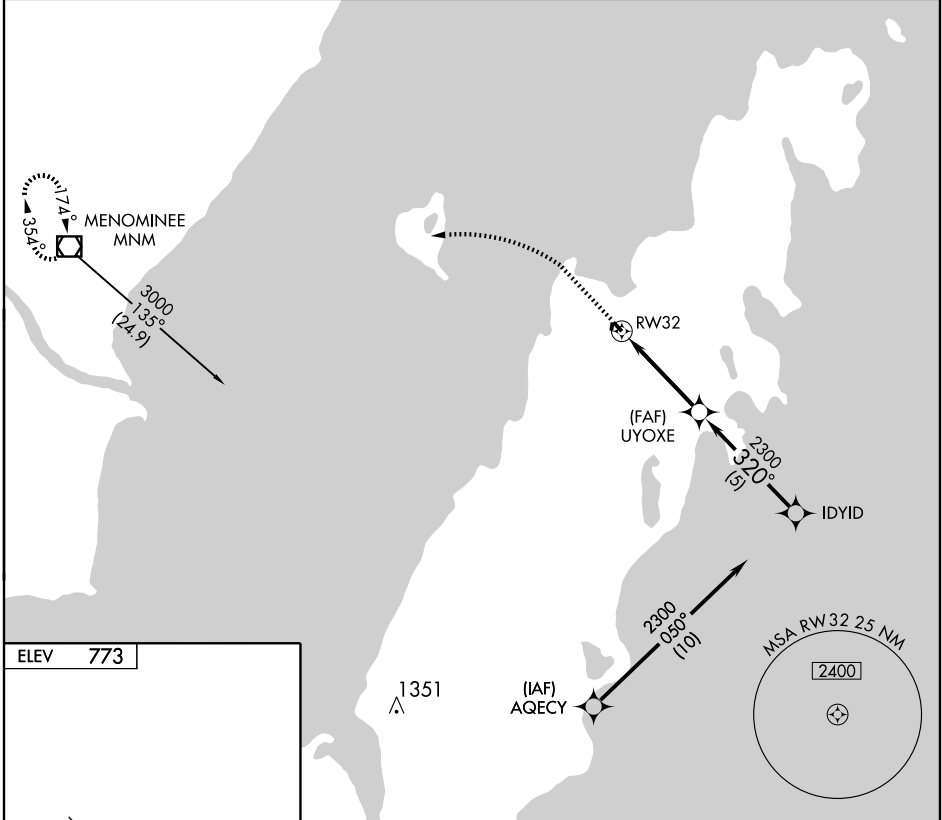
| | |
|------------------------|------------------------|
| APP CRS 320° | Rwy Idg 2700 |
| | TDZE 762 |
| | Apt Elev 773 |

▲ NA Use Menominee, MI altimeter setting.

MISSED APPROACH: Climb to 1700 then climbing left turn to 3000 direct MNM VOR/DME and hold.

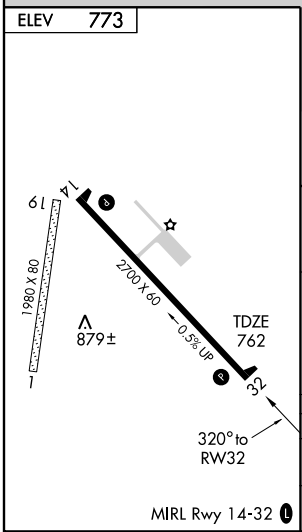
GREEN BAY APP CON *
119.5 338.2

UNICOM
123.0 (CTAF) 1



EC-3, 22 OCT 2009 to 19 NOV 2009

EC-3, 22 OCT 2009 to 19 NOV 2009



| | | | | |
|--------|------|------|-------|-------------------|
| 1700 | 3000 | MNM | UYOXE | IDYID |
| ↑ | ↶ | ◻ | | |
| RWY 32 | | | 2300 | 2300 |
| | | | 320° | |
| | | | | Procedure Turn NA |
| | | 4 NM | 5 NM | |

| CATEGORY | A | B | C | D |
|----------|--------|-------------|-------------------------|----|
| S-32 | 1200-1 | 438 (500-1) | 1200-1¼ 438 (500-1¼) | NA |
| CIRCLING | 1260-1 | 487 (500-1) | 1260-1½ 487 (500-1½) | NA |